



CAFE CAMPUS

#43 Amparo St., Camp 7 2600 Baguio City, Philippines



SPARTA CAMPUS

#37 Yangco Rd., Upper General Luna, Baguio City



CITY CAMPUS

#48 The Zone Vill Condominium, Bldg G, Montinola Subd., Kisad, Baguio City



B'CEBU

Angasil corner, Kasinto St., Mactan, 6015 Lapu-Lapu City, Cebu, Philippines

 BECinternational

 apibeci_official/

 APIBECI

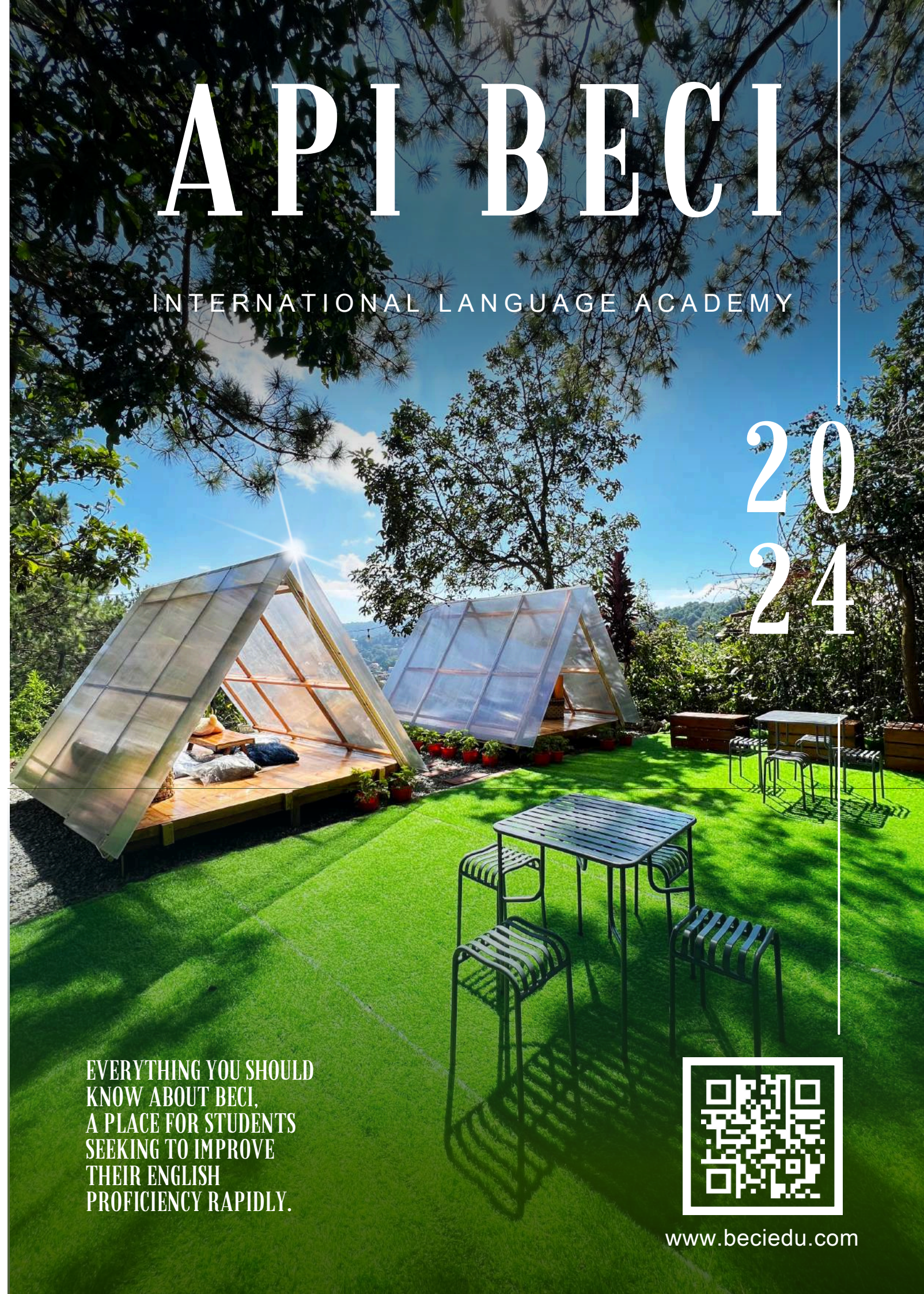
 www.beciedu.com



API BECI

INTERNATIONAL LANGUAGE ACADEMY

2024



EVERYTHING YOU SHOULD KNOW ABOUT BECI. A PLACE FOR STUDENTS SEEKING TO IMPROVE THEIR ENGLISH PROFICIENCY RAPIDLY.



WHAT'S INSIDE?

BAGUIO & BECI

01 WHY CHOOSE BAGUIO

Reasons Why it's good to study in Baguio

05 ABOUT API BECI

5 Reasons to choose API BECI

07 HISTORY HORIZON

Discover the fascinating history and timeline of API BECI academy!

09 CURRICULUM SUMMARY

Summary of Curriculum for Each Campus

CAFE CAMPUS

11 STRONG POINTS

Unique features specific to Cafe Campus.

13 LITE ESL & SPEED ESL

Curriculum: Lite ESL & Speed ESL

15 INTENSIVE ESL & WH

Curriculum: Intensive ESL & Working Holiday

17 STUDENT'S DORMITORY

Room types and features offered at the Cafe and Mansion dormitory.

21 ACADEMY AREA

Classrooms, Lounge Area. A place where you can study anywhere

23 CAFE FACILITIES

Dining Area, Garden, View deck, Coffee shop, Karaoke & SPA Center

SPARTA CAMPUS

25 STRONG POINTS

Unique features specific to Sparta Campus.

27 24 ESL PROGRAM

Curriculum: 24 ESL with SP Program

29 TOEIC AND IELTS

Curriculum: TOEIC & IELTS Program

31 STUDENT'S DORMITORY

Features available in the Sparta dormitory.

33 ACADEMY AREA

Test Center, Classrooms, SP Center, and Bulletin Board

35 SPARTA FACILITIES

Dining Area, GYM

CITY CAMPUS

37 STRONG POINTS

Unique features specific to City Campus.

39 LITE ESL & SPEED ESL

Curriculum: Lite ESL & Speed ESL

41 ESP AND IELTS

Curriculum: ESP AND IELTS Program

43 STUDENT'S DORMITORY

Room types and features offered at City Campus dormitory.

45 ACADEMY AREA

Presentation Room, Library, Co-working Space, Classrooms & Zoom Meeting Area

47 CITY FACILITIES

Dining Area, Indoor Store, etc.

ALL ABOUT BECI

49 PROSPECTIVE STUDENTS

Choosing the Right Campus for You

51 STUDENT'S TESTIMONIAL

Students' Feedback on API BECI Campuses

52 ACTIVITY PROGRAMS

Activities unique to each campus.

53 WEEKEND ACTIVITIES

Events and Activities for All BECI Students During the Weekend

55 NATIONALITY RATE

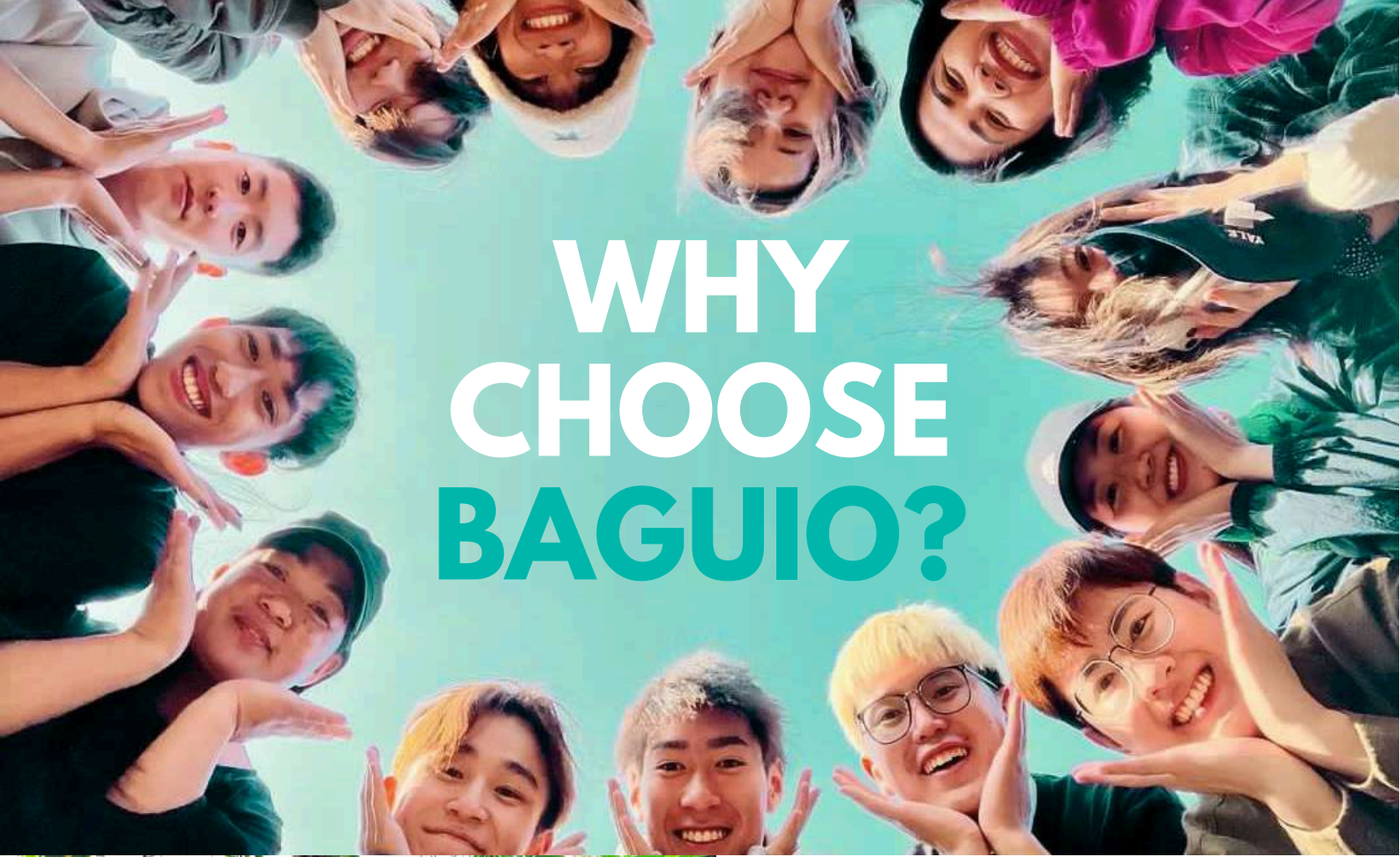
A website where you can find all the necessary information.

57 CAMPUS MAP

Campus map showcasing the locations of the BECI campuses.

59 API BECI POLICY

Rules and Regulations in BECI



WHY CHOOSE BAGUIO?



The northern center of Luzon Province, situated at an altitude of 1,500m and approximately 224 km north of the capital of Manila.

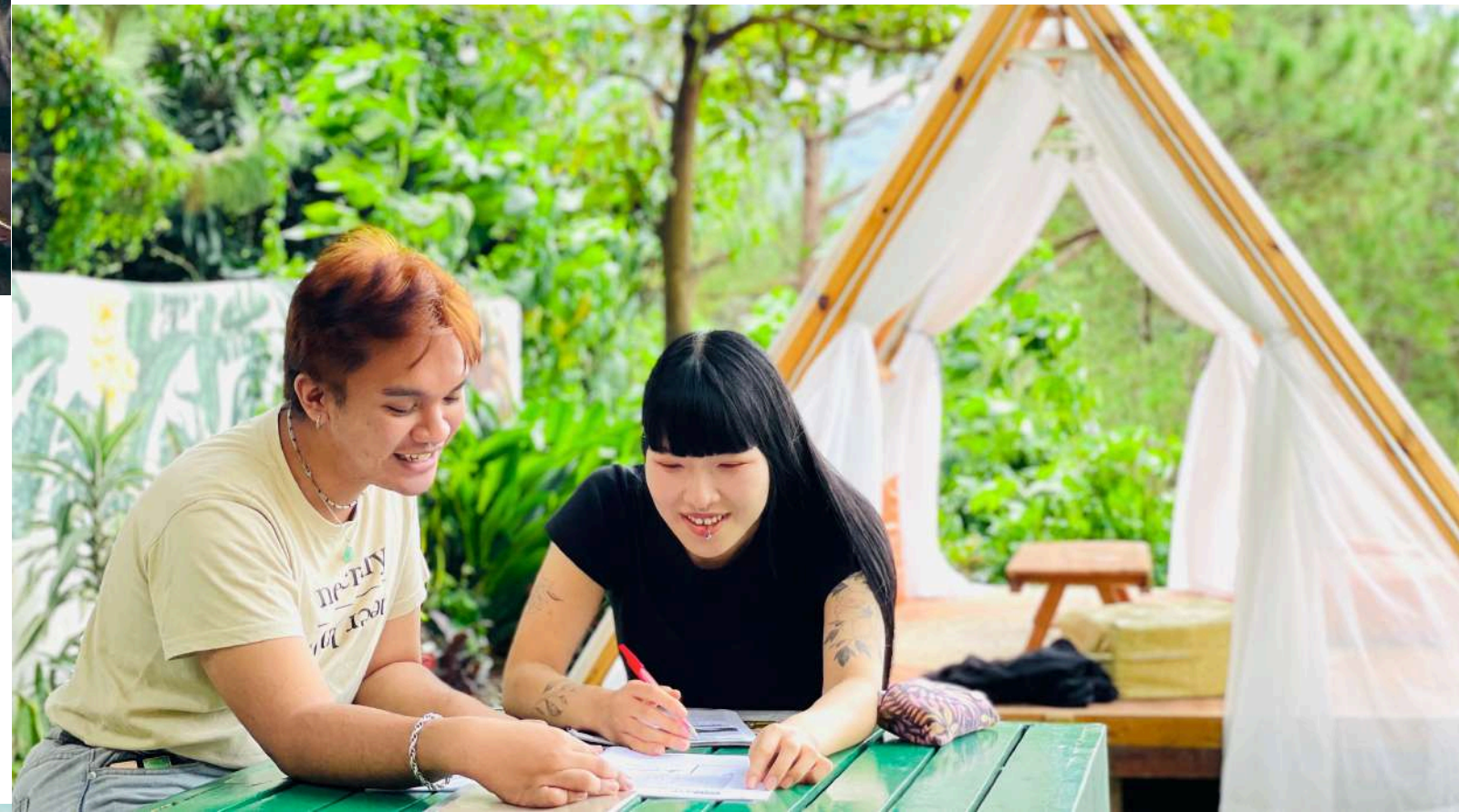
03. THE IDEAL ENVIRONMENT TO LEARN ENGLISH

In the Philippines, the Baguio region stands out with its cool climate, contrasting the typical tropical weather found inland. With temperatures ranging from 15 to 23 degrees Celsius year-round, the region offers a blend of warm and cool weather, creating an ideal setting for language training.



01. THE SAFE CITY

Baguio, known as the "Summer Capital of the Philippines," is safe due to its low crime rate, cool climate, scenic landscapes, and community spirit. Residents and authorities collaborate to maintain safety and security for all. The safety of our students is guaranteed, as our school is located in one of the safest areas in the city.



02. THE CENTER OF TRAVEL

Starting from downtown Baguio, which is full of interesting places to visit, there are many nearby tourist destinations that offer a variety of activities. You can go surfing at San Fernando Beach, visit the Hundred Islands, hike the famous Banaue Rice Terraces, and explore the caves in Sagada. Baguio City also has charming and peaceful locations, making it a great place to take a break during your language study.



04. THE CITY OF EDUCATION

Baguio is a city with a strong passion for education, with over 10 universities, 6 college universities, a medical school, and a military academy. BECI Language School takes advantage of these educational resources to provide high-quality classes led by experienced educators. Additionally, the region's outstanding English proficiency is linked to its past as a former US military resort town.



BAGUIO CITY

WHERE LEARNING HARMONIZES WITH NATURE

API BECI campuses are conveniently located near town, allowing you to explore various nearby places. This ensures you won't get bored during your stay while studying and enhancing your English skills here in the Philippines.



SM MALL

The SM Mall, located in the heart of Baguio, provides convenient access to a variety of shopping and entertainment options.



BURNHAM PARK

Burnham Park provides a range of activities including boating, biking, jogging, tennis, and rollerblading.



SESSION ROAD

Session Road is a hub for food and recreational stalls, closed Sundays to enhance the weekend, with street performances for a memorable experience.



MASSAGE

Baguio City offers a variety of massage options for you to explore and enjoy.



GOLF ACTIVITIES

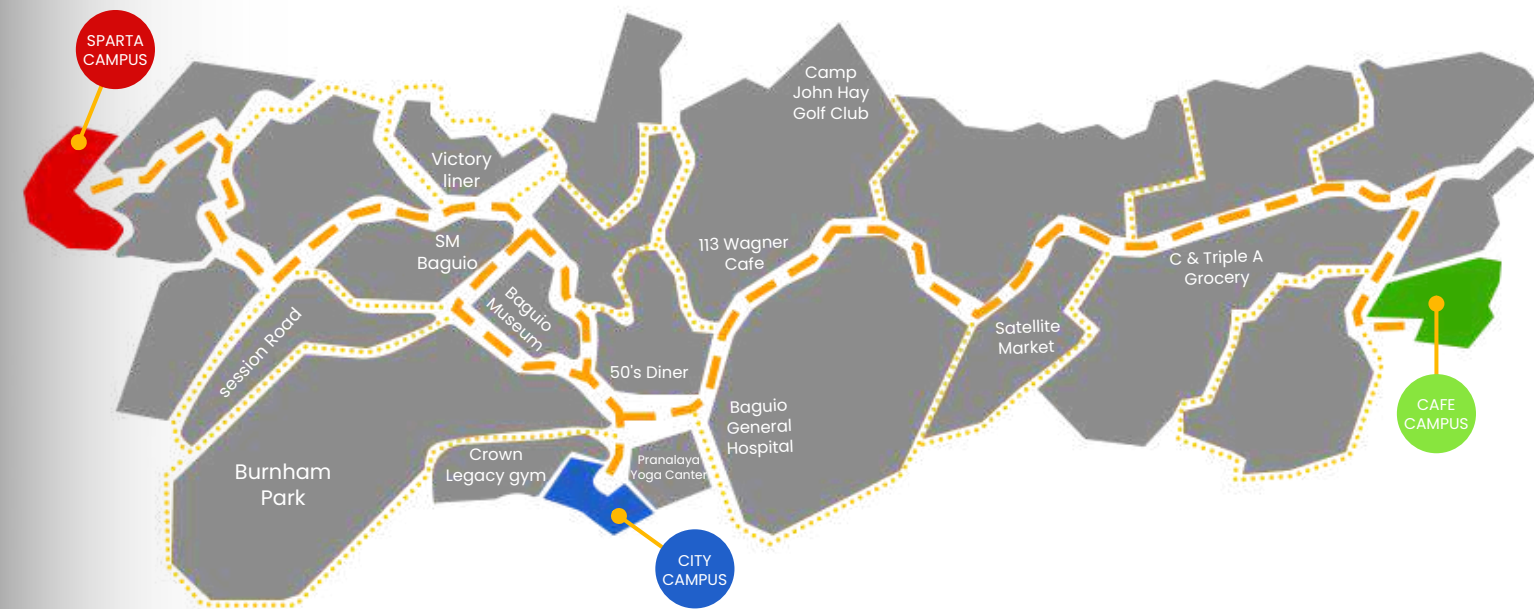
Baguio City offers a wide selection of golf courses, both indoor and outdoor, making it a great destination for golf enthusiasts.



CAFE & RESTAURANTS

In Baguio, you have a myriad of options to explore various cozy cafes and delicious restaurants, offering a wide array of choices to satisfy your culinary cravings.

CENTER OF ENGLISH EXCELLENCE



10 MINUTES
Sparta to City Campus



10 MINUTES
City to Cafe Campus



20 MINUTES
Cafe to Sparta Campus



CAFE CAMPUS
#43 Amparo St.,
Camp 7. 2600
Baguio City,
Philippines



CITY CAMPUS
#48 The Zone Vill
Condominium, Bldg
G, Montinola Subd.,
Kisad, Baguio City



SPARTA CAMPUS
#37 Yangco Rd.,
Upper General
Luna, Baguio City

"A new Language is a new Life"

5 REASONS TO CHOOSE API BECI

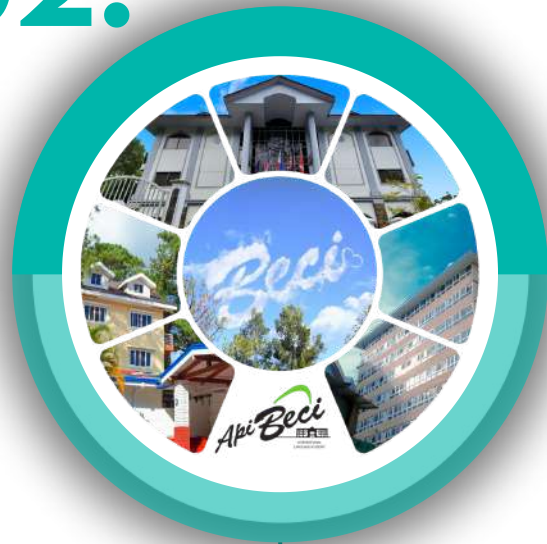
01.



MULTICULTURAL LEARNING ENVIRONMENT

The Beci language schools have diverse nationality ratios, with the 3+1 English dormitory at Sparta Campus accommodating students from various countries, promoting a progressive environment. Students can interact in English with peers from different nationalities, fostering diverse cultural experiences.

02.



API BECI 3 DISTINCTIVE CAMPUSES

The BECI Language Institute operates three campuses: Cafe for beginners' conversational skills, Sparta for intensive management, and City for office professionals and seniors who can integrate work with language studies concurrently. Students can choose based on their learning needs and switch campuses as needed.

03.



THE BECI EDUCARE SYSTEM

BECI Educare System is a student information system exclusive to Beci Language School, streamlining the management of students' progress. It covers courses for all students at Bessy Language School from enrollment to graduation. The system meticulously records and manages original training data, including assignment status, grades, and assessment videos.

04.



THE SPEAKING PRESCRIPTION PROGRAM

10 types of students' conversational skills, including pronunciation, intonation, vocabulary, and grammar usage, are assessed as part of a speaking diagnosis. Video recordings aid in effectively enhancing weaker areas of conversation. Speaking Prescription (SP) the program focuses on enhancing the speaking and vocal abilities of every student systematically.

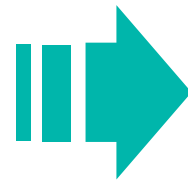
05.



API BECI WEEKEND ACTIVITIES

Engage in thrilling activities like surfing at San Fernando Beach, discovering Hundred Island, hiking the Banaue Rice Terraces – one of the globe's seven largest cultural heritage sites, and delving into the depths of Sagada Cave. Immerse yourself in extraordinary experiences that will surely be unforgettable.

API HISTORICAL BECI HORIZON



OUR CAMPUSES

Our three distinct campuses in Baguio cater to the varied requirements of students.

Furthermore, we are pleased to announce that, in addition to our Baguio sites, we have extended our reach by inaugurating a new campus in Cebu.

API BECI has started its journey in the ESL field in 2002 in the summer capital of the Philippines, Baguio City. It offers variety of courses crafted to support our learners second language acquisition goals.

Our curriculum is learner-centered and gives the utmost emphasis on the learning process as we expand our learners learning strategies so they could learn more by themselves and learn faster as a result.

We understand that the learning environment is as important as the other factors in learning thus our campuses are established in pristine location, where our students can study comfortably. Also, the learning and living areas are designed to ensure conducive learning and comfortable living.

With four campuses in different locations, students can discover and experience each campus' unique specialties and distinctive academic programs and courses. In this way, students can broaden their perspectives and gain exposure to new experiences and ideas that can help them grow.

API BECI TIMELINE

YEAR 2002

BECI OPENED THE SEMI-SPARTA CAMPUS IN BAGUIO GREEN VALLEY, KNOWN AS BECI GREEN VALLEY.

YEAR 2003 ~ 2010

- ONGOING INSTRUCTOR TRAINING SPONSORED BY TESLA (LANGUAGE TEACHER LICENSING ASSOCIATION)
- ESTABLISHING AN EDUCARE SYSTEM INCLUDING A DATABASE FOR STUDENT BASIC INFORMATION, LEVEL TEST, SP TEST VIDEO, AND MORE

YEAR 2010 ~ 2015

- THE SEMI-SPARTA BECI MAIN CAMPUS WAS OPENED AND TRANSFORMED INTO SPARTA CAMPUS.
- HUMAN RESOURCES DEVELOPMENT SERVICE OF KOREA IN COLLABORATION WITH AUSTRALIAN EMPLOYMENT PROCESS AND PHILIPPINE TRAINING INSTITUTE.

YEAR 2018, JANUARY

THE FIRST WOMEN-ONLY SEMI-SPARTA CAMPUS IN THE PHILIPPINES, KNOWN AS LADY CAMPUS, HAS NOW TRANSFORMED INTO CAFE CAMPUS. THIS CAMPUS IS NOW UNISEX, OFFERING SPEED ESL, INTENSIVE ESL, AND WORKING HOLIDAY COURSES AMONG OTHERS.

YEAR 2018, JUNE

ALS OPENED IN THE CENTER OF DISTRICT 1, HO CHI MINH CITY, VIETNAM PROFESSIONAL INSTRUCTORS FOR EACH SUBJECT CAREFULLY SELECTED FROM THE PHILIPPINES PROVIDING QUALITY LANGUAGE EDUCATION IN HO CHI MINH CITY, VIETNAM (INTRODUCTION OF A LEARNING SYSTEM COMBINING ONLINE AND OFFLINE)

YEAR 2022, JULY

A 3+1 ENGLISH DORMITORY OFFERING STRUCTURED LIVING MANAGEMENT. WEEKDAY OUTINGS ARE SUPERVISED, AND THE SPARTA CAMPER IS MANAGED BY EOP. THE FACILITY OFFERS 24 ESL (INTENSIVE CONVERSATION COURSE) CLASSES, TOEIC, IELTS BASIC CLASSES, AND AN IELTS GUARANTEED CLASS.

YEAR 2022, DECEMBER

LOCATED IN THE HEART OF BAGUIO CITY, A SPECIALIZED CAMPUS CATERS TO OFFICE WORKERS SEEKING TRAINING OPPORTUNITIES. THE "CITY CAMPUS" OFFERS A RANGE OF COURSES SUCH AS SPEED ESL, IELTS, ESP, AND FLEXI COURSES TO MEET VARIOUS LEARNING NEEDS.

YEAR 2023, JULY

MACTAN, RECOGNIZED AS THE EMERGING CITY IN CEBU, IS THE HOME OF B'CEBU, CATERING TO UP TO 700 INDIVIDUALS AND OFFERING A RANGE OF PROGRAMS SUCH AS SPEED ESL, INTENSIVE ESL, B'SPARTA, AND IELTS COURSES.



API BECI ACADEMY

CURRICULUM SUMMARY

SEMI-SPARTA SPARTA AUTONOMOUS



CAMPUS

CAFE CAMPUS

SPARTA CAMPUS

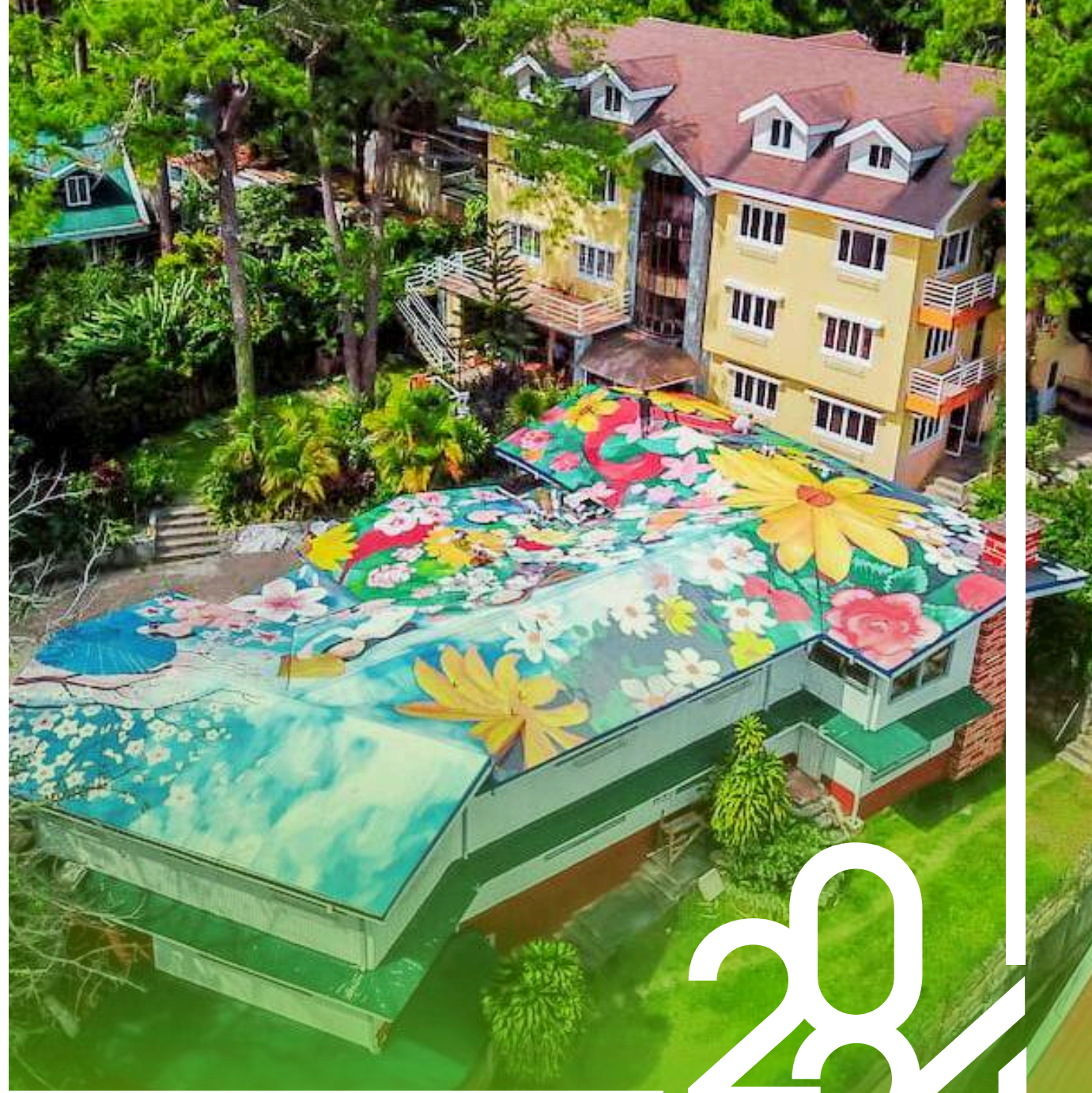
CITY CAMPUS

COURSE NAME	CONTENT	ADMISSION LEVEL	CLASS COMPOSITION AND TIME
LITE ESL	It is a course that offers a relaxed learning pace and flexibility in scheduling class times, making it ideal for students who value reviewing their materials and having personal time.	No restrictions	6 classes 1:1 classes - 2 classes Group Classes - 2 classes Night Classes - 2 classes (optional classes)
SPEED ESL	Speed ESL, also known as Semi-sparta, holds a significant historical value as the flagship course of the bachelor's program at API BECI.	No restrictions	8 classes 1:1 classes - 4 classes Group Classes - 2 classes Night Classes - 2 classes (optional classes)
INTENSIVE SPARTA ESL	Intensive ESL courses require more one-on-one class hours and night commitments than Speed ESL courses. Our program facilitates quick English proficiency growth with engaging lessons.	No restrictions	9 classes 1:1 classes - 5 classes Group Classes - 2 classes Night Classes - 2 classes (compulsory classes)
WORKING HOLIDAY	English Program and Barista Training for Students Preparing for a Working Holiday. This program combines hands-on training in bakery, haircare, and nail care.	No restrictions	9 classes 1:1 class-4 classes / Group class - 2 classes "Special Program - 1 classes Night Classes - 2 classes (optional classes)
24 ESL	24 ESL is a short-term program with 7 hours of regular classes a day and 3 hours of night study. It is designed for students who want to improve their English skills intensively.	No restrictions	10 classes 1:1 classes - 5 classes Group Classes - 2 classes Night Classes - 3 classes (Compulsory self-study&test)
TOEIC	The TOEIC Grammar and Vocabulary course is popular among students preparing for the TOEIC exam. It helps improve TOEIC skills through mock tests.	No restrictions	9 classes 1:1 classes - 4 classes Group Classes - 2 classes Night Classes - 3 classes (Compulsory self-study&test)
IELTS	Preparing for the IELTS exam involves familiarizing yourself with its grammar and vocabulary, especially if it's your first time. This process is designed for individuals looking to improve their IELTS skills.	No restrictions	9 classes 1:1 classes - 4 classes Group Classes - 2 classes Night Classes - 3 classes (Compulsory self-study&test)
SPEED ESL	Speed ESL, also known as Semi-sparta, holds a significant historical value as the flagship course of the bachelor's program at API BECI.	No restrictions	6 classes 1:1 classes - 4 classes Group Classes - 2 classes
LITE ESL	It is a course that offers a relaxed learning pace and flexibility in scheduling class times, making it ideal for students who value reviewing their materials and having personal time.	No restrictions	4 classes 1:1 classes - 2 classes Group Classes - 2 classes
ESP	ESP stands for English for Specific Purposes, tailored to individual student needs. The course includes Business English, Travel English, Current Affairs, Presentations, and more, with personalized 1:1 classes meeting specific requirements.	No restrictions	6 classes 1:1 classes - 4 classes Group Classes - 2 classes
IELTS	Preparing for the IELTS exam involves familiarizing yourself with its grammar and vocabulary, especially if it's your first time. This process is designed for individuals looking to improve their IELTS skills.	No restrictions	6 classes 1:1 classes - 6 classes

BECI CAFE CAMPUS

API BECI CAFE CAMPUS

FOR BEGINNERS | NATURE-INFUSED | SERENE



2024

* Open date : 2018

* Capacity: Up to 70 people (including outside dormitory)

* Operating Mode: Semi-sparta to Sparta

* Dormitory: Men's 1-3 capacity rooms / Women's 1-4 capacity rooms

* Address: 43 gladiola Street Amparo Heights, Camp 7 Baguio City

STRONG POINTS

"Cafe Campus provides specially designed programs for complete beginners in English, fostering a supportive learning atmosphere for individuals who are new to the language."



NATIONALITY QUOTA ENFORCEMENT

Cafe Campus is situated in one of the most affluent and well-liked neighborhoods of Camp 7 in Baguio City. Moreover, it offers a secure environment with CCTV surveillance to guarantee safety.



ENSURE EFFECTIVE LAW ENFORCEMENT.

At Cafe Campus, a maximum of 10 students are accepted from each country. This setting offers a space for you to effortlessly socialize with international peers and converse in English.



SPECIAL OFFERS DESIGNED SPECIFICALLY FOR STUDENTS.

In order to enhance the training experience for students, we offer complimentary Americano coffee on weekday mornings, host a BBQ party every month, and provide massage services at the Cafe Campus.



HEALING HAVEN: A CAFE MOTIF IN THE FOREST

Healing Campus - Café Campus in Baguio offers a serene forest café setting with a View Deck Cottage, lush gardens, and panoramic views for a tranquil escape from the city.



OPERATION OF VARIOUS CUSTOMIZED COURSES

We offer customized ESL courses from Semi-sparta to Sparta focused on improving pronunciation and communication skills. Additionally, there is a special program for students preparing for a working holiday.



LITE ESL

LITE ESL is a more streamlined version of Speed ESL. Students engage in two hours of individual classes daily and two hours of group sessions. During class, you have the option to study or relax. Both the 1:1 CLASS and GROUP CLASS cover the same material as the SPEED ESL program.

SPEED ESL

The Speed ESL course, known as Semi-sparta, is the oldest BECI bachelor's program, popular among students of all proficiency levels. It covers Speaking, Listening, Reading, and Writing with a structured curriculum for effective learning.

Level: No Restrictions

Class time
 1:1 classes – 2 classes
 Group classes – 2 classes
 Night Classes – 2 classes (optional)

Test schedule once a month (including SP test)

LEARNING OBJECTIVES

- In the LITE ESL course, students choose the English vocabulary they want to focus on. The goal is to study and review.

RECOMMENDED TARGET

- Freelancer, part-time online student, and senior language trainee.
- Students interested in studying English independently.

Level: No Restrictions

Class time
 1:1 classes – 4 classes
 Group classes – 2 classes
 Night Classes – 2 classes (optional)

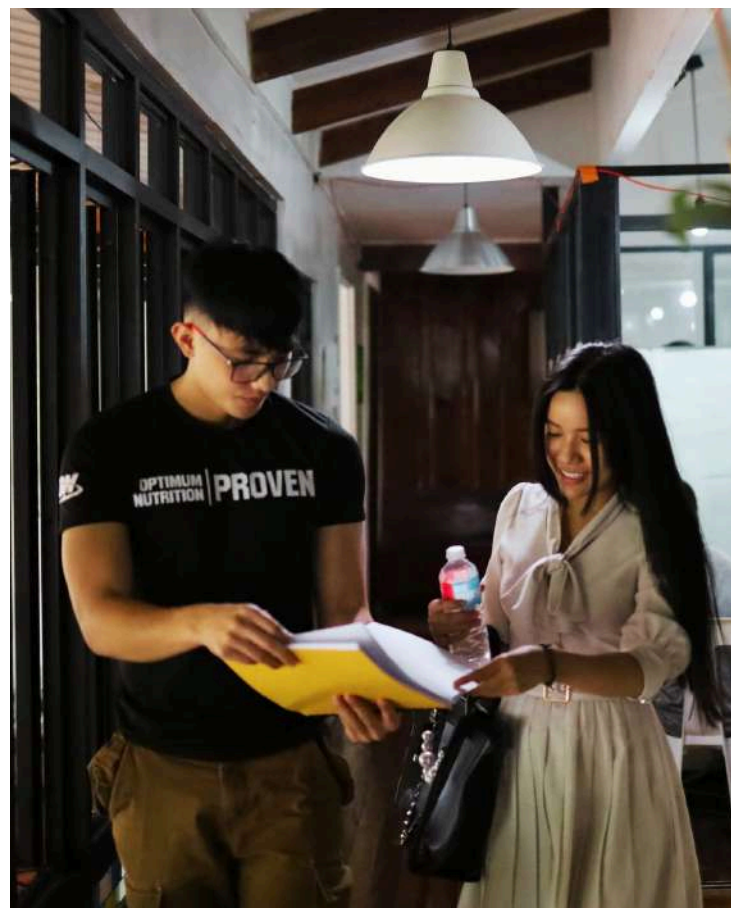
Test schedule once a month (including SP test)

LEARNING OBJECTIVES

- Master the four English skills – speaking, listening, reading, and writing – by participating in well-structured classes. Enhance your self-directed learning skills by engaging in complex learning activities.

RECOMMENDED TARGET

- Individuals seeking a conducive environment to learn English freely.
- Individuals looking to utilize English for practical reasons.



LITE ESL SAMPLE SCHEDULE

CLASS TIME	SUBJECT	CLASS TYPE
08:00-08:50		BREAK
09:00-09:50		BREAK
10:00-10:50	Listening	Group Class
11:00-11:50	Speaking	1:1 Class
12:00-12:50		LUNCH
13:00-13:50		BREAK
14:00-14:50	Reading	1:1 Class
15:00-15:50		BREAK
16:00-16:50	Grammar	Group Class
17:00-17:50		DINNER
18:00-18:50	Sound Right	Night Class
19:00-19:50		BREAK
20:00-20:50	Vocabulary	Night Class

- LITE ESL offers both 1:1 and group classes, with course content identical to the SPEED ESL program.
- Students enrolled in the LITE ESL course have the option to join and participate in Night Classes.

1:1 CLASS

- Speaking – Practical and beneficial for natural communication with non-native speakers: Acquire new vocabulary and expressions.
 - Reading – Enhances reading comprehension and vocabulary, with each section covering engaging and relevant topics: Receive a printed guide and explore commonly used vocabulary and idioms.
 - Idioms – Understand and learn idioms commonly used by non-native speakers: Discover how idioms are structured and their meanings.
 - Expression / Listening / Grammar / Writing:
- *To enroll in these four subjects, kindly request separately during consultation with the coordinator. Available at no extra cost.*

GROUP CLASS

- Pronunciation – This course teaches American speech rhythm, contracted words, colloquial contractions, and articulation. It focuses on mastering vowel and consonant sounds, intonation patterns, phrases, blends, and smooth transitions between nouns and verbs.
- Listening – The content spans various topics including everyday life and news, covering specific information, main points, elaboration, summarization, narrative structure, inferences, and predictions.
- Writing – We conduct a variety of writing activities to practice parts of speech, clause functions, and sentence structure.
- Grammar – Grammar classes consist of learning content within grammatical categories such as tenses, questions, and articles.

NIGHT CLASS (OPTION)

- Vocabulary
- Native Speaking 1,2,3
- Speaking Pronunciation
- Fun with Conversation Grammar
- Sound Right
- Pattern English 1,2
- What Can I Say?
- Night Classes are available based on students' level and preferences.
- Each student can enroll in a maximum of two Night Classes.
- The Night Classes have a maximum capacity of 10 students.
- Registration for Night Classes is conducted locally and follows a first-come, first-served approach.

SPEED ESL SAMPLE SCHEDULE

CLASS TIME	SUBJECT	CLASS TYPE
08:00-08:50	Writing	1:1 Class
09:00-09:50		BREAK
10:00-10:50	Listening	Group Class
11:00-11:50	Speaking	1:1 Class
12:00-12:50		LUNCH
13:00-13:50	Expression	1:1 Class
14:00-14:50	Reading	1:1 Class
15:00-15:50		BREAK
16:00-16:50	Grammar	Group Class
17:00-17:50		DINNER
18:00-18:50	Sound Right	Night Class
19:00-19:50		BREAK
20:00-20:50	Vocabulary	Night Class



This program is more structured compared to the Speed ESL course. It is designed for students who prefer controlled guidance rather than those who enjoy active learning.

INTENSIVE SPARTA ESL

This course is designed for students getting ready for a working holiday. It assists candidates in securing their desired job by emphasizing the acquisition of practical and useful phrases through extensive conversation practice tailored to various scenarios.

WORKING HOLIDAY

Level: No Restrictions

Class time
 1:1 classes – 5 classes
 Group classes – 2 classes
 Night Classes – 2 classes
 (compulsory class)

Test schedule every week (including SP test)

LEARNING OBJECTIVES

- Students identify their English communication weaknesses, and we offer top-notch, effective programs to help you quickly overcome them.

RECOMMENDED TARGET

- Individuals aiming to enhance their speaking skills quickly
- Individuals seeking structured study sessions according to a set timetable

Level: No Restrictions

Class time
 1:1 classes – 4 classes
 Group classes – 2 classes
 Practical classes – 1 classes
 Night Classes – 2 classes (optional)

Test schedule once a month (including SP test)

LEARNING OBJECTIVES

- In our structured courses, we focus on improving speaking, listening, reading, and writing skills through hands-on learning experiences to prepare you for challenges during your working holiday program.

RECOMMENDED TARGET

- Students aiming to enhance their English proficiency in preparation for an overseas working holiday
- Students seeking to gain practical English skills by mastering a variety of useful expressions

1:1 CLASS

- Speaking – Practical and beneficial for natural communication with non-native speakers: Acquire new vocabulary and expressions.
 - Reading – Enhances reading comprehension and vocabulary, with each section covering engaging and relevant topics: Receive a printed guide and explore commonly used vocabulary and idioms.
 - Idioms – Understand and learn idioms commonly used by non-native speakers: Discover how idioms are structured and their meanings.
 - Expression / Listening / Grammar / Writing:
- *To enroll in these four subjects, kindly request separately during consultation with the coordinator. Available at no extra cost.

GROUP CLASS

- Pronunciation – This course teaches American speech rhythm, contracted words, colloquial contractions, and articulation. It focuses on mastering vowel and consonant sounds, intonation patterns, phrases, blends, and smooth transitions between nouns and verbs.
- Listening – The content spans various topics including everyday life and news, covering specific information, main points, elaboration, summarization, narrative structure, inferences, and predictions.
- Writing – We conduct a variety of writing activities to practice parts of speech, clause functions, and sentence structure.
- Grammar – Grammar classes consist of learning content within grammatical categories such as tenses, questions, and articles.

NIGHT CLASS (MANDATORY)

- Vocabulary
- Native Speaking 1,2,3
- Speaking Pronunciation
- Fun with Conversation Grammar
- Sound Right
- Pattern English 1,2
- What Can I Say?

- Sparta course students are required to attend Night Classes.
- The subjects available for Night Classes in the Sparta course are restricted.
- Each Night Class can accommodate a maximum of 10 students.

INTENSIVE ESL SAMPLE SCHEDULE

CLASS TIME	SUBJECT	CLASS TYPE
08:00-08:50	Writing	1:1 Class
09:00-09:50	Idioms	1:1 Class
10:00-10:50	Listening	Group Class
11:00-11:50	Speaking	1:1 Class
12:00-12:50		LUNCH
13:00-13:50	Expression	1:1 Class
14:00-14:50	Reading	1:1 Class
15:00-15:50		BREAK
16:00-16:50	Grammar	Group Class
17:00-17:50		DINNER
18:00-18:50	Sound Right	Night Class
19:00-19:50		BREAK
20:00-20:50	Vocabulary	Night Class

1:1 CLASS

- Speaking – Practical and beneficial for natural communication with non-native speakers: Acquire new vocabulary and expressions.
 - Reading – Enhances reading comprehension and vocabulary, with each section covering engaging and relevant topics: Receive a printed guide and explore commonly used vocabulary and idioms.
 - Idioms – Understand and learn idioms commonly used by non-native speakers: Discover how idioms are structured and their meanings.
 - Expression / Listening / Grammar / Writing:
- *To enroll in these four subjects, kindly request separately during consultation with the coordinator. Available at no extra cost.

GROUP CLASS

- Pronunciation – This course teaches American speech rhythm, contracted words, colloquial contractions, and articulation. It focuses on mastering vowel and consonant sounds, intonation patterns, phrases, blends, and smooth transitions between nouns and verbs.
- Listening – The content spans various topics including everyday life and news, covering specific information, main points, elaboration, summarization, narrative structure, inferences, and predictions.
- Writing – We conduct a variety of writing activities to practice parts of speech, clause functions, and sentence structure.
- Grammar – Grammar classes consist of learning content within grammatical categories such as tenses, questions, and articles.

NIGHT CLASS (OPTION)

- Vocabulary
- Native Speaking 1,2,3
- Speaking Pronunciation
- Fun with Conversation Grammar
- Sound Right
- Pattern English 1,2
- What Can I Say?

- Night Classes are available based on students' level and preferences.
- Each student can enroll in a maximum of two Night Classes.
- The Night Classes have a maximum capacity of 10 students.
- Registration for Night Classes is conducted locally and follows a first-come, first-served approach.

WORKING HOLIDAY SAMPLE SCHEDULE

CLASS TIME	SUBJECT	CLASS TYPE
08:00-08:50	Writing	1:1 Class
09:00-09:50		BREAK
10:00-10:50	Listening	Group Class
11:00-11:50	Speaking	1:1 Class
12:00-12:50		LUNCH
13:00-13:50	Expression	1:1 Class
14:00-14:50	Reading	1:1 Class
15:00-15:50	Barista Training	Practical Class
16:00-16:50	Grammar	Group Class
17:00-17:50		DINNER
18:00-18:50	Sound Right	Night Class
19:00-19:50		BREAK
20:00-20:50	Vocabulary	Night Class

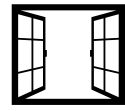
PRACTICAL CLASS

- Barista Training
- Baking
- Pizza Making
- Hair/Nail Care

STUDENT'S DORMITORY



WIFI



WINDOW



CLOSET



DESK



REFRIGERATOR



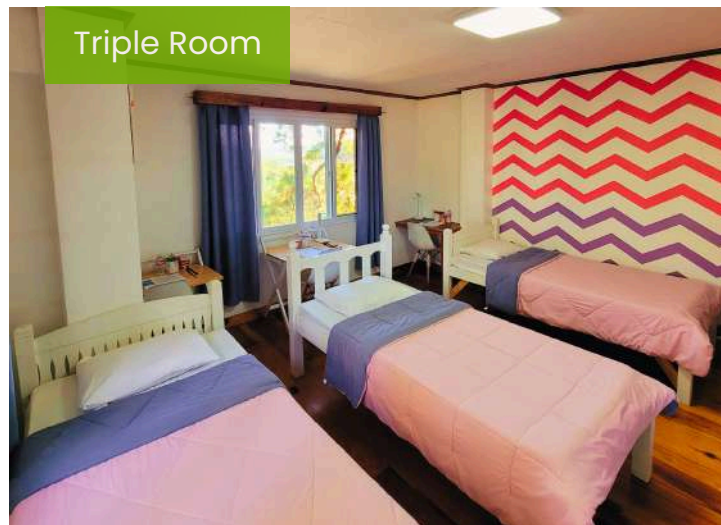
SHOWER



HAIR DRYER



Twin Room



Triple Room



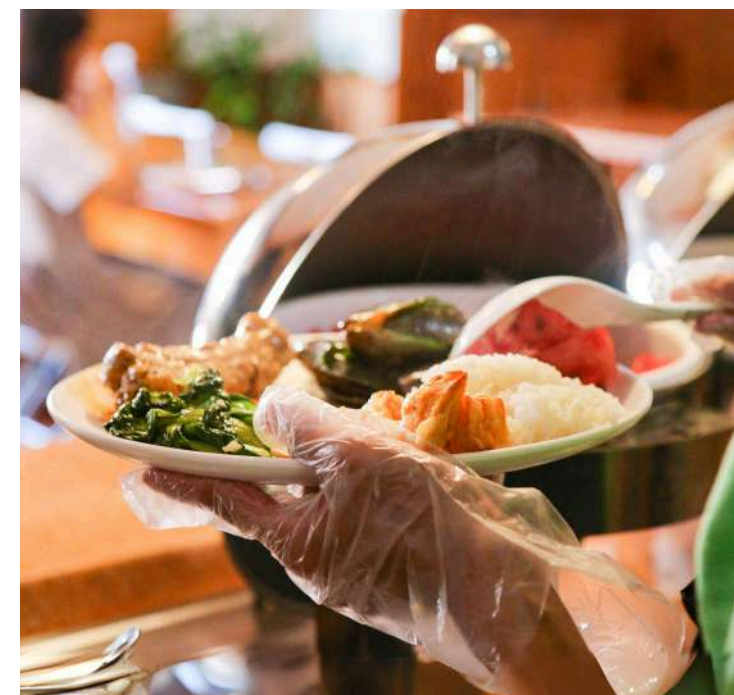
Quad Room



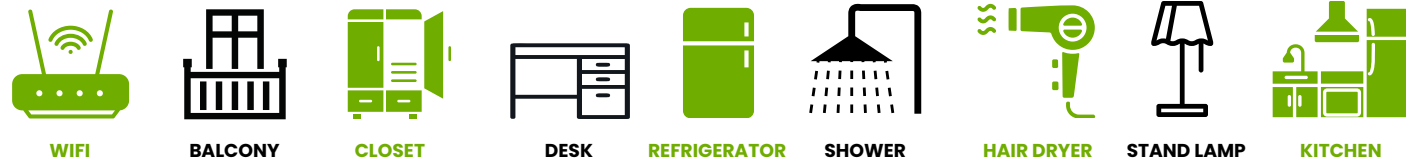
Shower Room



Shared Bathroom



SINGLE ROOM TYPE DORMITORY



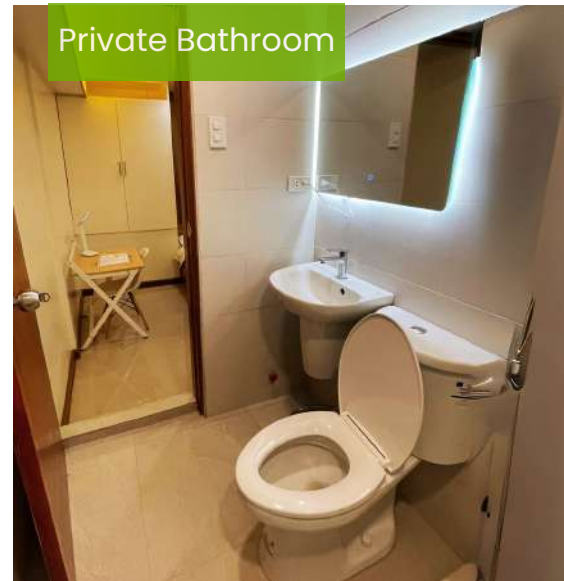
ROOM TYPE

The dormitory is designed like an apartment, featuring a living room and kitchen. It consists of master single rooms with an attached bathroom and regular single rooms without an attached bathroom (the shared bathroom is located in the living room).

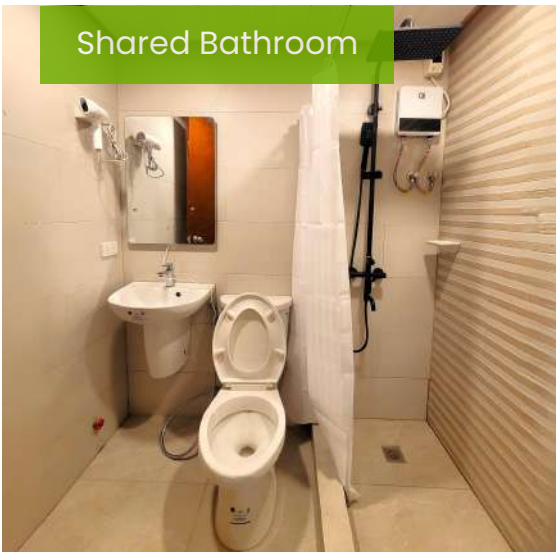
Master Single



Private Bathroom



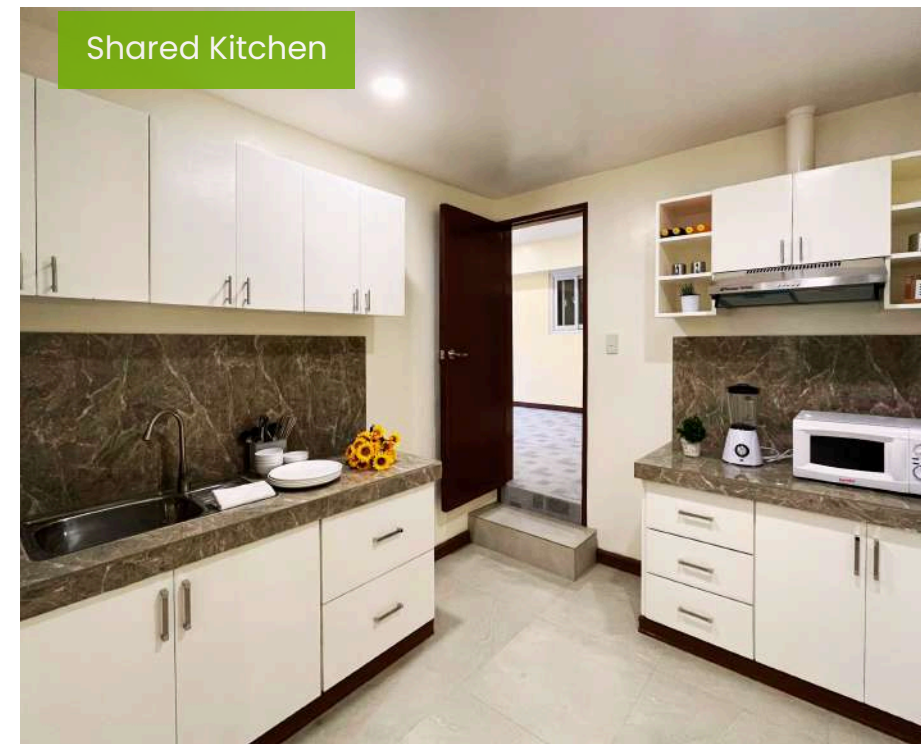
Shared Bathroom



Regular Single



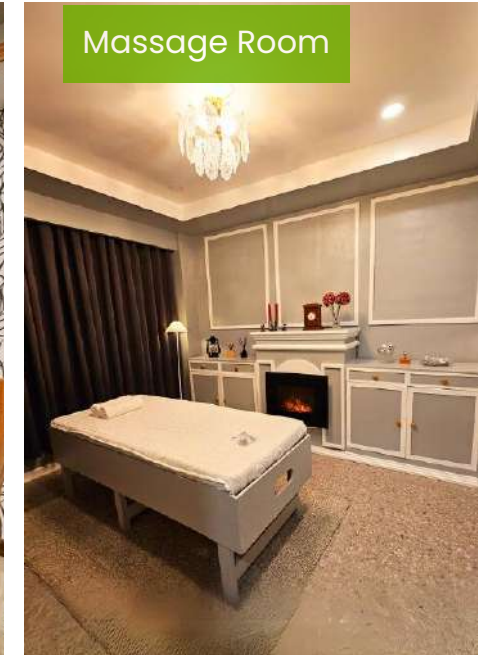
Shared Kitchen



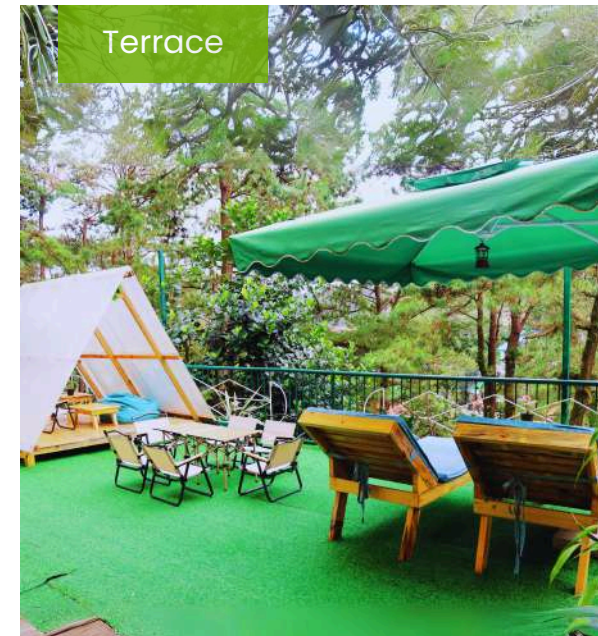
Shared Living Room



Massage Room



Terrace



Single Room Type Dormitory



The Single Room type dormitory of café is located just a brief 30-second walk from Café Campus.

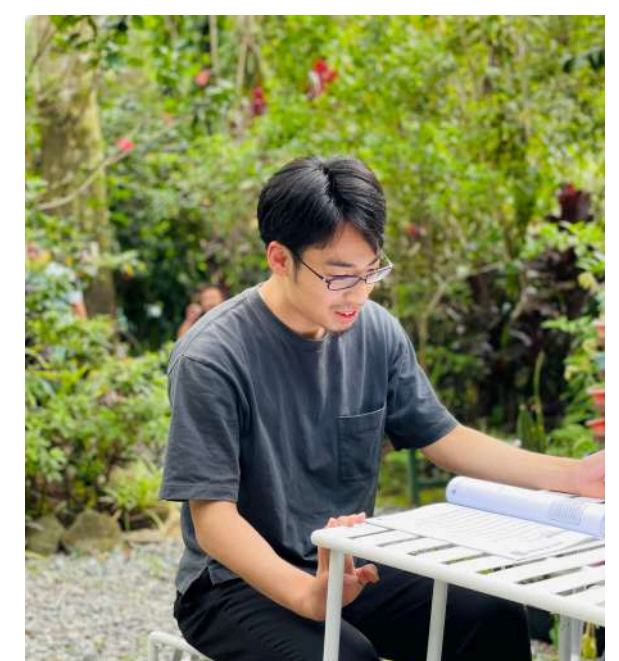
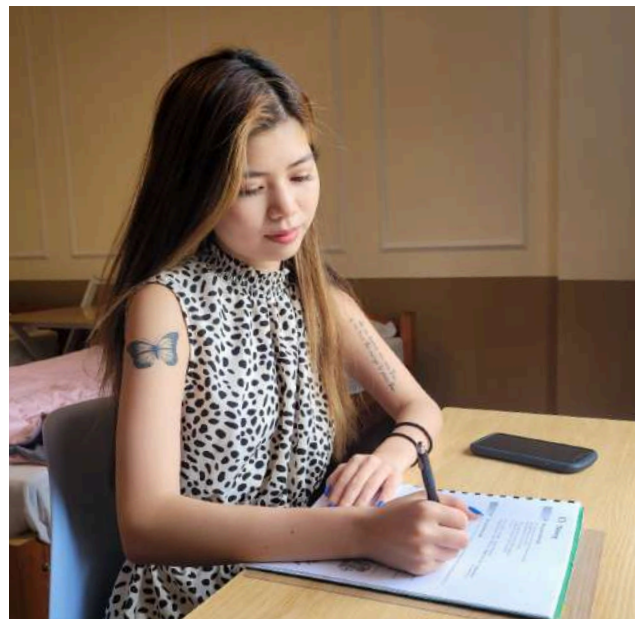
Introducing our new dormitory on the café campus!
We offer premium and regular options for any gender.

ACADEMY AREA

1:1 Classroom



Group Classroom



Student Lounge



Hallway



FACILITIES

Front yard



Cafe Zone



Terrace



View Deck



API BECI SPARTA CAMPUS

DISCIPLINED | EFFICIENT | RESULTS-DRIVEN

SPARTA CAMPUS
INTERNATIONAL ACADEMY
EST. 2012

2024

SPARTA CAMPUS

- * Open date : July 2022
- * Capacity: Up to 80 people
- * Operating Mode: Sparta
- * Dormitory: 3+1 room , normal 4 rooms
- * Address: 37 Yangco Road, Upper General Luna, Baguio City

STRONG POINTS

"Sparta program" refers to a rigorous and intensive education or training program in Korea, emphasizing hard work and challenging experiences, typically in a specific field or discipline.



SPARTA SYSTEM

The sparta Campus runs classes on weekdays (Mon-Fri) with classes exceeding 9 hours a day. Students' academic and personal lives are closely monitored through mandatory night tests and additional activities.



3+1 ENGLISH BOARDING HOUSE & BUDDY TEACHER

In a four-room dormitory, three international students live with a Filipino Buddy teacher who teaches daily expressions and supports their well-being and academic progress.



SP PROGRAM

The Speaking Prescription (SP) program improves speaking skills through self-assessment using the SP test. It targets vocabulary, diction, accentuation, and pronunciation for improvement through focused practice.



EOP LIFE CHALLENGER

The EOP Challenger Program enhances students' communication skills and offers vouchers for canteen and laundry services to successful participants. A non-refundable participation fee of 500 pesos is required.



DAILY TEST

At the sparta campus, students engage in vocabulary tests and practice exams on weekday nights (Mon-Thu) to improve English language skills efficiently due to systematic management.



24 ESL

24 ESL is an intensive English learning program with 7 hours of daily classes, 3 hours of night study, and weekly SP tests focusing on improving English conversation skills across various criteria like grammar, stress, pronunciation, and intonation.

Add-On Programs

SP PROGRAM FOR 24 ESL

The Speaking Prescription (SP) program is an intensive speaking program where students assess their speaking proficiency by participating in grammar classes and speaking assessments, identify weak speaking areas (such as vocabulary, diction, stress, and pronunciation) to focus on and enhance intensively.

24 ESL course students have the opportunity to enhance their speaking abilities through the SP program, offered as a 1:1 class called Speaking for SP. The objective is to express yourself confidently in English without any hesitation, with an SP interview test held every Friday.

*The speaking practice interview test is held weekly for 24 ESL course students and monthly for TOEIC & IELTS students.



Level: No Restrictions

Class time

- 1:1 classes – 5 classes
- Group classes – 2 classes
- Night Classes – 3 classes (compulsory classes)

Test schedule once a month (including SP test)

LEARNING OBJECTIVES

- The objective is to enhance all aspects of English proficiency, including speaking, through a structured Sparta system and daily assessment tasks.

RECOMMENDED TARGET

- Those who want to improve English communication skills such as speaking in a short period of time and gain confidence
- Those who want to study tight according to the specified schedule. Test schedule 1 time per month (including SP test every Friday)

1:1 CLASS

- Speaking for SP - Our aim is to assist students in responding confidently by encouraging them to apply the vocabulary and expressions they have acquired in class during the weekly SP test on Fridays.
- Reading - The objective is to enhance students' comprehension by engaging in reading tasks that enhance vocabulary, reading comprehension, and pronunciation skills.
- Writing - Learn basic sentence structures and techniques to enhance sentences in creative or formal writing.
- Speaking - Additional speaking classes that provide additional opportunities to improve your speaking skills while expressing your thoughts on specific topics.
- Picture Description - Describes the contents of the picture in English and provides opportunities for students to think creatively.

*For 1:1 classes, students have the opportunity to concentrate on their preferred subjects by aligning with their individual preferences. (Course content is change.)

GROUP CLASS

- GC Speaking - Engage in a range of speaking skills enhancement exercises organized by the group's instructor to help you speak confidently about your thoughts.
- GC Listening - Understand commonly used expressions, understand the gist of the topic you are talking about, practice listening to the opinions of others, understand the laws of English, and Develop listening strategies

NIGHT CLASS (MANDATORY)

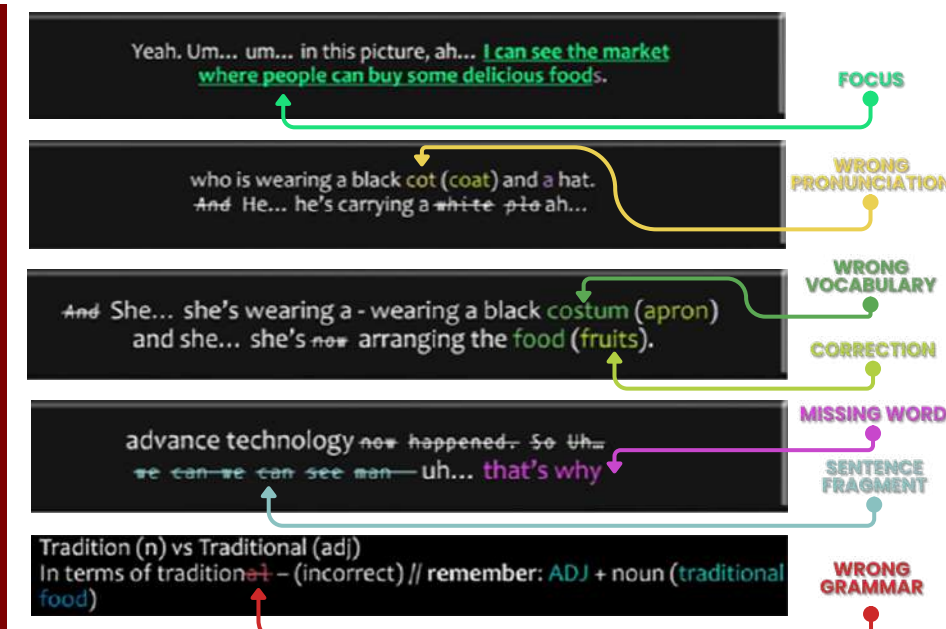
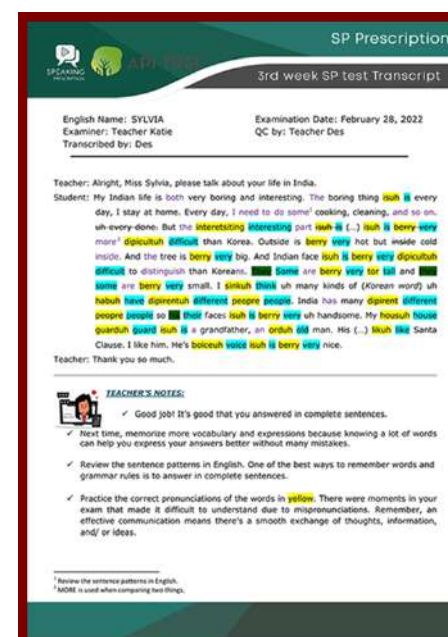
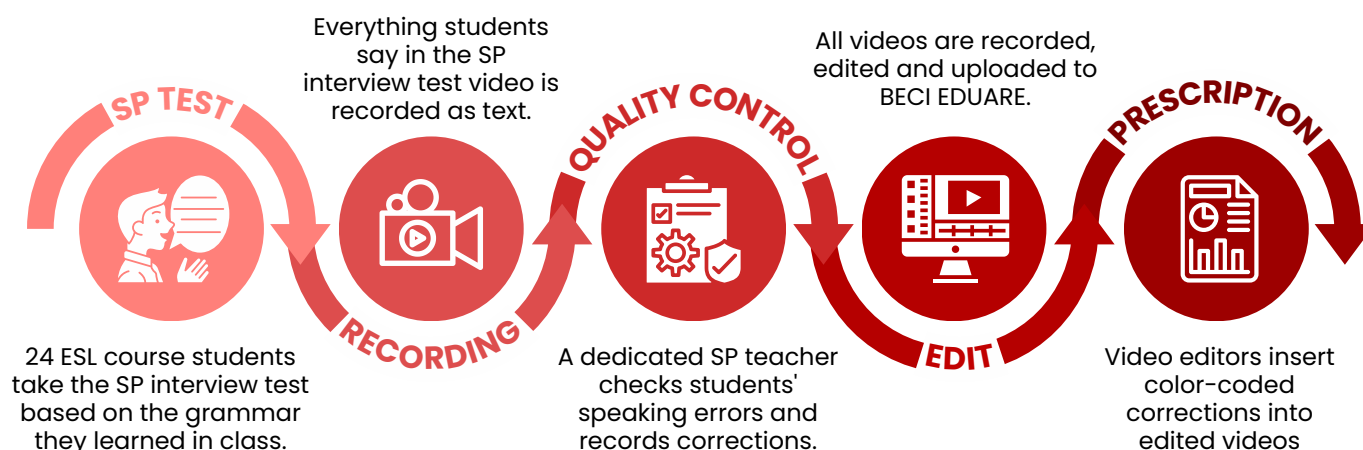
- Daily Voca (words) 20 memorization 1 hour
- Daily Dialogue 10 sentence memorization 1 hour
- Daily Test (Word & Conversation) 1 hour
- The Daily test (Monday–Thursday) acceptance criteria are at least 80% correct, and if you fail, you must write the words and sentences that were asked in the Daily test 10 times and submit them for the next Night Study. In addition, reviews of the Daily test are conducted in 1:1 classes the next day, and full Weekly reviews are conducted on Friday Night time.

24 ESL SAMPLE SCHEDULE

CLASS TIME	SUBJECT	CLASS TYPE
08:00-08:50	Reading	1:1 Class
09:00-09:50		BREAK
10:00-10:50	Speaking	1:1 Class
11:00-11:50	Writing	1:1 Class
12:00-12:50		LUNCH
13:00-13:50	Speaking for SP	1:1 Class
14:00-14:50	GC Speaking	Group Class
15:00-15:50	Picture Description	1:1 Class
16:00-16:50	GC Listening	Group Class
17:00-17:50	Daily Voca20	Night Class
18:00-18:50	Daily Dialogue10	Night Class
18:50-20:00		DINNER
20:00-20:50	Daily test	Night Class



SP PROGRAM PROCESS





This course is designed for students aiming to establish a solid understanding of TOEIC grammar and vocabulary, as well as for those seeking to enhance their TOEIC skills by engaging in regular mock tests.

TOEIC

The IELTS Basics COURSE is for those who are preparing for the IELTS test for the first time or who want to build a strong foundation for the IELTS exam. The IELTS Class is a program that ensures a specific score for students focusing on grammar and vocabulary, enabling them to reach their desired score according to their initial exam results.

IELTS

Level: No Restrictions

Class time
 1:1 classes – 4 classes
 Group classes – 2 classes
 Night Classes – 3 classes
 (compulsory class)

Test schedule once a month (including SP test)

LEARNING OBJECTIVES

- Consistently practice the TOEIC program to enhance your English proficiency in all areas: speaking, listening, writing, grammar, and vocabulary.

RECOMMENDED TARGET

- Students who start TOEIC for the first time
- Students who want to learn TOEIC basic grammar and vocabulary firmly and develop a sense of practice

Level: No Restrictions

Guaranteed class
 (Guaranteed score by admission score):
 4.0–5.5 Warranty, 5.0–6.0 Warranty
 6.0–6.5 Warranty, 6.5–7.0 Warranty

Class time
 1:1 classes – 4 classes
 Group classes – 2 classes
 Night Classes – 3 classes (compulsory class)

Test schedule once a month (including SP test)

LEARNING OBJECTIVES

- Build IELTS basic skills and become familiar with the test format. We help you achieve your desired score within a set period of time by intensively strengthening your English skills required for the IELTS test.

RECOMMENDED TARGET

- Learners who lack basic knowledge of IELTS and want to prepare for the test by understanding the question patterns of each test type (IELTS basic class)
- Learners who have an official IELTS score or have experience with this test course and want to receive a guaranteed target score (IELTS Guarantee Class)

1:1 CLASS

- RC Part (+Review) for 2 hours (Part 5-7) - Enhancing students' TOEIC grammar skills by focusing on fundamental patterns, essential points, and guiding students on how to identify the correct answers for the comprehensive question format in the test.
- LC Part (+Review) 2 hours (Part 1-4) - Instructors share their expertise and skills to help students grasp the correct responses to questions. Emphasis is placed on enhancing listening skills through repeated exposure to the learning material until students comprehend it clearly.

*In 1:1 classes, you have the flexibility to concentrate on the subjects that interest you, tailoring the course to meet each student's preferences. (The course can be adjusted as needed)

GROUP CLASS

- TOEIC GC Grammar Speaking-Grammar is basic in all English courses. Grammar Speaking lessons are designed to strengthen the foundations for various areas of grammar in the TOEIC READING exam.
- TOEIC GC Listening - The GC Listening Group classes enhance students' comprehension and familiarity with the TOEIC Listening Test. They also offer effective strategies and approaches for tackling the test problems.

NIGHT CLASS (MANDATORY)

- The TOEIC course's Night Class (Monday-Thursday) includes a 2-hour TOEIC Daily Mock test and a 1-hour TOEIC Daily Vocabulary test.

*Daily test reviews take place in 1:1 classes the next day, while comprehensive weekly reviews are held during Friday Night Class.

TOEIC SAMPLE SCHEDULE

CLASS TIME	SUBJECT	CLASS TYPE
08:00~08:50	Reading Part5,6	1:1 Class
09:00~09:50		BREAK
10:00~10:50	Listening Part1,2	1:1 Class
11:00~11:50	Reading Part7	1:1 Class
12:00~12:50		LUNCH
13:00~13:50	Listening Part3,4	1:1 Class
14:00~14:50	GC Speaking	Group Class
15:00~15:50		BREAK
16:00~16:50	GC Listening	Group Class
17:00~17:50	Daily Test(RC1)	Night Class
18:00~18:50	Daily Test(RC2)	Night Class
19:00~19:50		DINNER
20:00~20:50	Daily Test(Voca)	Night Class

- Night Study of all courses (24 ESL, TOEIC Basic Class, IELTS Basic Guaranteed Class) operated by Sparta Campus is compulsory participation, and the contents of the self-study are predetermined.
- If you are absent from the class without permission, you will be able to self-study on Saturday twice the amount of time you are absent on weekdays.

1:1 CLASS

- Speaking: Enhance your English speaking skills and confidence by practicing with past exam questions. Our structured approach familiarizes you with different question types through targeted exercises.
- Reading: Develop strategies to tackle reading comprehension questions of varying difficulty levels. Gain practical experience by practicing with mock tests.
- Listening: Learn effective listening strategies, practice solving past exam question types, and engage in practical exercises to improve your listening skills.
- Writing: Receive personalized instruction on writing techniques and detailed feedback on writing assignments to enhance your writing abilities.

*In 1:1 classes, students can focus on preferred subjects to tailor the course to their individual needs. (Class course can be change.)

GROUP CLASS

- IELTS GC Speaking: Discover effective strategies and techniques to excel in the IELTS Speaking test. Learn how to tackle challenging questions swiftly and efficiently, and get ready for the exam with in-depth explanations and sample responses.
- IELTS GC Listening: Access the most up-to-date materials needed for IELTS Listening, receive comprehensive feedback from an expert IELTS Listening teacher, and enhance your listening vocabulary.

NIGHT CLASS (MANDATORY)

- In the Night Class (Monday to Thursday) of the IELTS Basic and Guaranteed Courses:
 - *A 2-hour IELTS Daily mock test will be administered.
 - *A 1-hour TOEIC Daily Voca test will be conducted.
- Reviews for daily tests will be held in 1:1 classes the following day, with comprehensive weekly reviews scheduled for Friday's Night Class.

IELTS SAMPLE SCHEDULE

CLASS TIME	SUBJECT	CLASS TYPE
08:00~08:50	Reading for IELTS	1:1 Class
09:00~09:50		BREAK
10:00~10:50	Listening for IELTS	1:1 Class
11:00~11:50	Speaking for IELTS	1:1 Class
12:00~12:50		LUNCH
13:00~13:50	Writing for IELTS	1:1 Class
14:00~14:50	GC Speaking	Group Class
15:00~15:50		BREAK
16:00~16:50	GC Listening	Group Class
17:00~17:50	Daily IELTS Test	Night Class
18:00~18:50	Test Review	Night Class
19:00~19:50		DINNER
20:00~20:50	Daily IELTS Voca	Night Class

STUDENT'S DORMITORY



WIFI



BALCONY



CLOSET



DESK



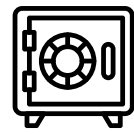
REFRIGERATOR



SHOWER



HAIR DRYER

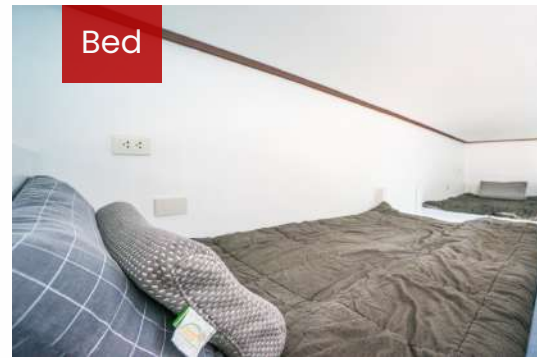


SAFETY BOX

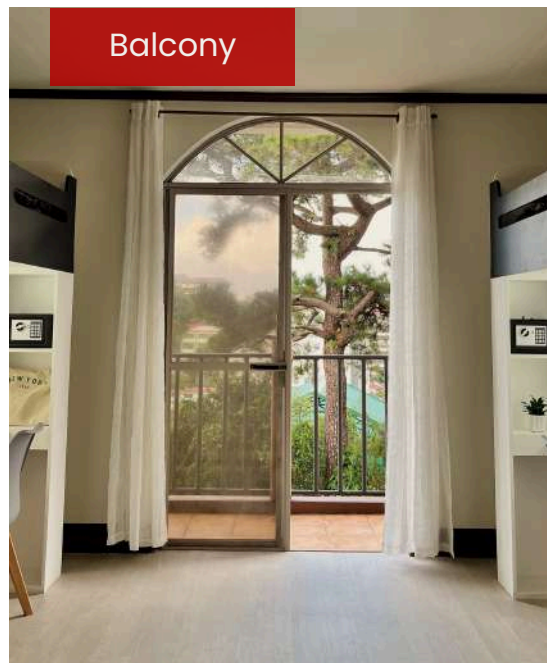
Quad Dormitory



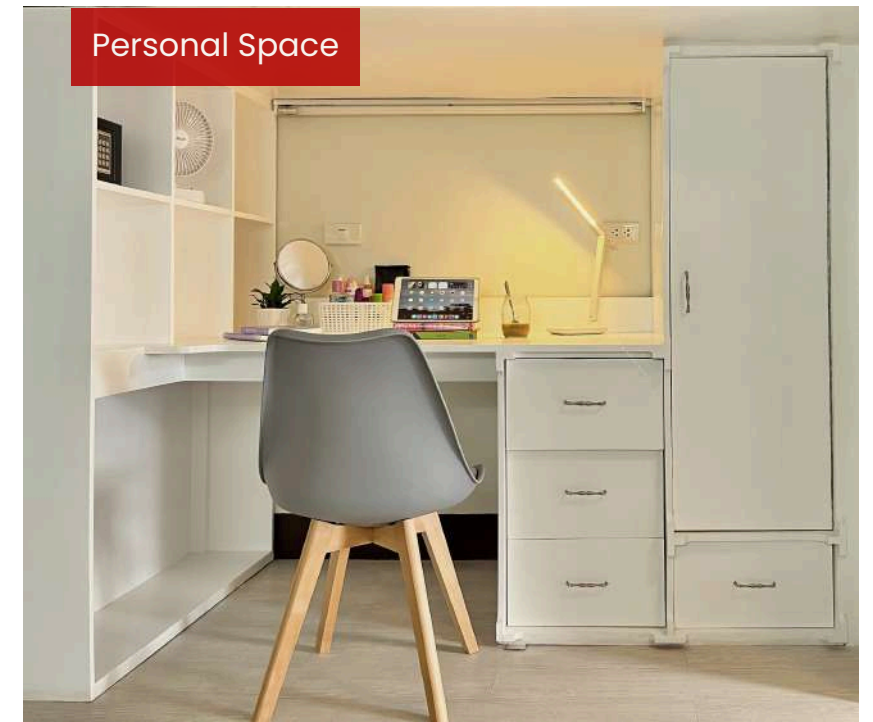
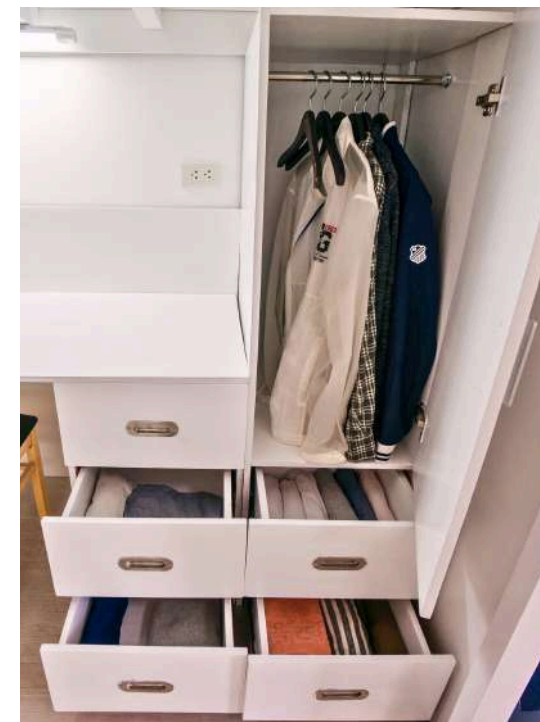
Bed



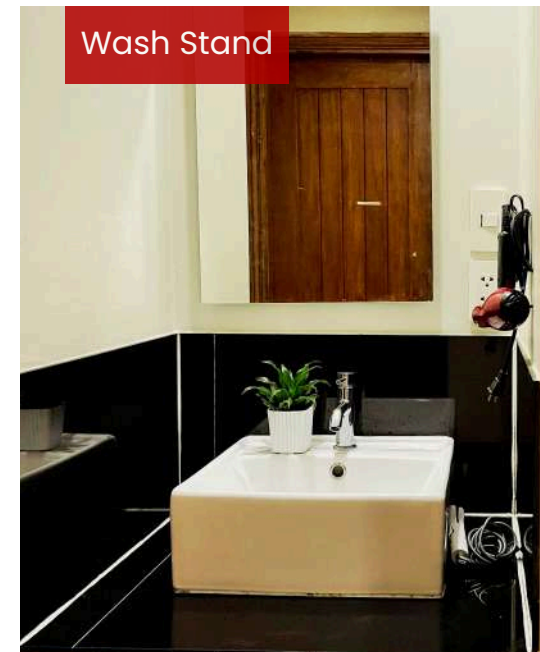
Balcony



Personal Space



Wash Stand



Restroom



ACADEMY AREA

Academic Bulletin Board



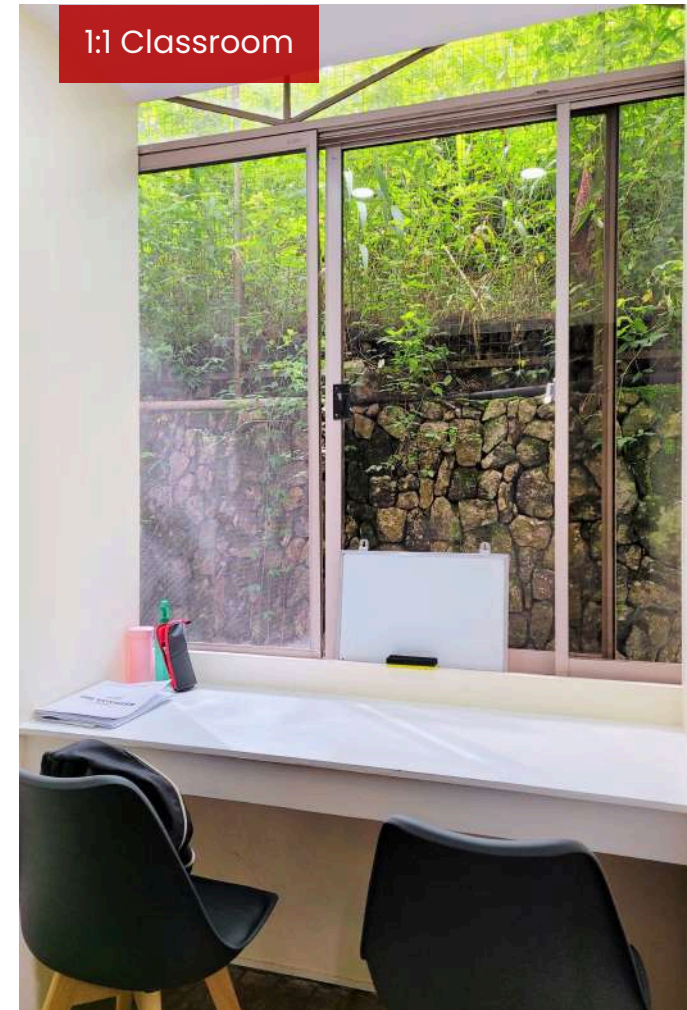
SP Test



SP Center



1:1 Classroom



Group Classroom



Test Center



FACILITIES

Dining Area



Fitness Gym



From 9 p.m.
(Mon to Thursday)
15 mins 3+1 Dorm Class

Students learn
2-3 English
Expressions that they
often use in real life.

the card parts

FRONT

- the phrase
- name of the card set

BACK

- the illustration.
- key word variations (past tense, present, even usage if applicable)
- the meaning of the word
- examples (up to three examples if applicable for varied applications)



draw the curtains

- DORM PHRASE
- [1] Close the curtains

EXAMPLE
Don't forget to draw the curtains when you wake.
My roommate drew the curtains because he hates the sun.



make your bed

- DORM PHRASE
- [1] Fix your bed and pillows.

EXAMPLE
My roommate is very tidy. He always makes his bed after he wakes up.



API BECI CITY CAMPUS

DYNAMIC | CONVENIENT | ADAPTABLE

2024

CITY CAMPUS

- * Open date : December 2022
- * Capacity: Up to 70 people
- * Operating Mode: Autonomous
- * Dormitory: Studio type (1,2,4 rooms), Semi-type (Semi-master single, Semi-single)
- * Address: 48 Kisad Rd, Montinola Subd, Baguio City

STRONG POINTS

"City Campus" is a specialized hub for adult English education, offering tailored programs designed for professionals and working individuals.



AUTONOMOUS WORK CENTER

The City Campus is a hub for adult students without curfew restrictions, catering to various individuals like college graduates, office workers, freelancers, and seniors. Students can socialize, share experiences, and engage in language training together.



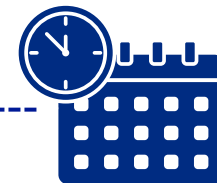
EXCELLENT CAMPUS FACILITIES

The school's lecture hall, where students study, features a coworking space, online zoom meeting, and presentation room as well as a class room. The dormitory also boasts a comfortable and pleasant interior that is not enough for students to live in.



LOCATED IN THE HEART OF BAGUIO CITY

Located in the heart of Baguio, close to Burnham Park, students can enjoy jogging or walking in the morning or evening. A 2-minute walk to Crown Legacy Hotel with a fitness center, a 1-minute walk to a professional yoga center, and a 15-20-minute walk to SM Shopping Mall.



FLEXI COURSE OPERATIONS

The 1:1 Class offers Flexi courses that can be taken from 5:00 p.m. onwards, allowing students to flexibly adjust their academic schedules to suit their work style. (Speed ESL, Lite ESL, ESP Flexi course running / however, 1:1 Class 1 hour reduction)



STUDENT-TAILORED CURRICULUM

We run ESP, a course that allows students to take 1:1 classes in subjects (Business, Travel English, live/current affairs, presentation, SP, etc.) for individual purposes. Students can also change their Group Class 2 hours to 1:1 Class 1 hour.



LITE ESL

LITE ESL is a more streamlined version of Speed ESL. Students engage in two hours of individual classes daily and two hours of group sessions. During class, you have the option to study or relax. Both the 1:1 CLASS and GROUP CLASS cover the same material as the SPEED ESL program.

SPEED ESL

The Speed ESL course, known as Semi-sparta, is the oldest BECI bachelor's program, popular among students of all proficiency levels. It covers Speaking, Listening, Reading, and Writing with a structured curriculum for effective learning.

Level: No Restrictions

Class time
1:1 class – 2 classes
(Flexi Lite ESL: 1:1 class – 1 class)
Group classes – 2 classes

Test schedule once a month (including SP test)

LEARNING OBJECTIVES

- In the LITE ESL course, students choose the English vocabulary they want to focus on. The goal is to study and review.

RECOMMENDED TARGET

- Freelancer, part-time online student, and senior language trainee.
- Students interested in studying English independently.

Level: No Restrictions

Class time
1:1 classes – 4 classes
(Flexi Lite ESL: 1:1 class – 3 class)
Group classes – 2 classes
Night Classes – 2 classes (optional)

Test schedule once a month (including SP test)

LEARNING OBJECTIVES

- Through a solid composition of lessons, you can learn four English areas of speaking, listening, reading, and writing in a complex and develop self-directed learning skills.

RECOMMENDED TARGET

- Individuals seeking a conducive environment to learn English freely.
- Individuals looking to utilize English for practical reasons.

LITE ESL SAMPLE SCHEDULE

CLASS TIME	SUBJECT	CLASS TYPE
08:00~08:50		BREAK
09:00~09:50	Reading	1:1 Class
10:00~10:50	Listening	Group Class
11:00~11:50	Speaking	1:1 Class
12:00~12:50		LUNCH
13:00~13:50		BREAK
14:00~14:50	Grammar	Group Class
15:00~15:50		BREAK
16:00~16:50		BREAK
17:00~17:50		DINNER

FLEXI LITE ESL SAMPLE SCHEDULE

CLASS TIME	SUBJECT	CLASS TYPE
08:00~11:50		BREAK
12:00~12:50		LUNCH
13:00~13:50		BREAK
14:00~14:50	Listening	Group Class
15:00~15:50		LUNCH
16:00~16:50	Grammar	Group Class
17:00~17:50		DINNER
18:00~18:50	Speaking	Night 1:1 Class



* LITE ESL, Flexi Lite ESL 1:1 CLASS and GROUP CLASS
The course content is the same as the SPEED ESL program.

1:1 CLASS

- Speaking-Learn practical and useful vocabulary and expressions that can communicate naturally with foreigners.
 - Reading-Focuses on reading comprehension and vocabulary, with interesting and themed prints provided for each section. You can also learn frequently used vocabulary and idioms.
 - Idioms-Learn the idioms often used by real foreigners and understand together how each idiom is tied to different forms, meanings, and tenses.
 - Expression / Listening / Grammar / Writing
- *If you want to take the above four subjects, you can request them separately through consultation with the coordinator. (No extra cost)

GROUP CLASS

- Pronunciation - This lesson covers American speech rhythms, contracted words, colloquial abbreviations, and phonemes, including vowel sounds. Practice pronunciation by focusing on consonants, intonation patterns, phrases, blends, and smooth transitions between nouns and verbs.
- Listening - The listening class materials cover a wide range of topics, from everyday life to news, where you will encounter specific details, main points, descriptions, summaries, story titles, inferences, and estimations tailored to each topic.
- Writing - Engage in various writing exercises to enhance your understanding of parts of speech, verse functions, and sentence structure.
- Grammar - Grammar lessons involve learning about different grammatical categories such as tenses, interrogatives, and articles.

SPEED ESL SAMPLE SCHEDULE

CLASS TIME	SUBJECT	CLASS TYPE
08:00~08:50	Writing	1:1 Class
09:00~09:50		BREAK
10:00~10:50	Listening	Group Class
11:00~11:50	Speaking	1:1 Class
12:00~12:50		LUNCH
13:00~13:50	Expression	1:1 Class
14:00~14:50	Reading	1:1 Class
15:00~15:50		BREAK
16:00~16:50	Grammar	Group Class
17:00~17:50		DINNER

FLEXI SPEED ESL SAMPLE SCHEDULE

CLASS TIME	SUBJECT	CLASS TYPE
08:00~11:50		BREAK
12:00~12:50		LUNCH
13:00~13:50		BREAK
14:00~14:50	Listening	1:1 Class
15:00~15:50		BREAK
16:00~16:50	Grammar	Group Class
17:00~17:50	Speaking	Night 1:1 Class
18:00~18:50		Dinner
19:00~19:50	Reading	Night 1:1 Class
20:00~20:50	Writing	Night 1:1 Class



ESP, which stands for English for Specific Purposes, is a course that enables you to have personalized 1:1 classes tailored to subjects like Business English, Travel English, Live/Current Affairs, Presentations, SP, and more to meet your specific needs.

ESP

We aim to build solid IELTS basic skills and familiarize ourselves with test types. This is a step-by-step systematized course to effectively acquire the English skills required to obtain an IELTS-certified test score.

IELTS

Level: No Restrictions

Class time

1:1 classes - 4 classes
Group Classes - 2 classes

Test schedule once a month (including SP test)

LEARNING OBJECTIVES

- Based on what you learn in ESP classes, we aim to apply it to your interests and key areas and express it fluently in English.

RECOMMENDED TARGET

- Subjects like Business English, Travel English, Current English, and Presentation English are available for students who prefer personalized 1:1 classes for their training.

1:1 CLASS

MAIN SKILL	SUBJECT
Speaking	Business English
	Travel English
	Presentation
	Student's Choice
	SP (Speaking Prescription)
Reading	Live ESL
	Business English
	Travel Destinations
Listening	Student's Choice
	Business Listening
	Travel Listening
	Student's Choice
Writing	Live ESL
	Business Writing
	Letter Writing
	Student's Choice
	Grammar

GROUP CLASS

MAIN SKILL	SUBJECT
Speaking	GC Speaking
Presentation	GC Presentation

EXAMPLE SUBJECT

- Business English - Learn vocabulary and expressions related to Business English, how to express effective messages to a large audience, including speaking, reading, listening, etc.
- Travel English - You can learn vocabulary and expressions related to travel, solve cultural differences, learn expressions that are often asked and used in travel destinations, etc.
- Live ESL - helps students improve English skills through daily lessons on various trending topics like business, travel, health, and politics, enhancing listening, comprehension, pronunciation, and speaking abilities.
- Student's Choice - Students can choose from a variety of subjects, such as grammar and listening, to learn the details they want.

*For 1:1 classes, you can also focus on the course you want to take, reflecting the preferences of each student. (Course can be changed)

ESP SAMPLE SCHEDULE

CLASS TIME	SUBJECT	CLASS TYPE
08:00-08:50		BREAK
09:00-09:50	Listening for Travel Listening	1:1 Class
10:00-10:50	GC Speaking	Group Class
11:00-11:50	Speaking for Presentation	1:1 Class
12:00-12:50		LUNCH
13:00-13:50	Speaking for SP	1:1 Class
14:00-14:50	Reading for Business English	1:1 Class
15:00-15:50		BREAK
16:00-16:50	GC Presentation	Group Class
17:00-17:50		DINNER

Level: No Restrictions

Class time

1:1 classes - 6 classes

Test schedule once a month (including SP test)

LEARNING OBJECTIVES

- Build IELTS basic skills and become familiar with the test format. We help you achieve your desired score within a set period of time by intensively strengthening your English skills required for the IELTS test.

RECOMMENDED TARGET

- Beginners studying IELTS for the first time
- Learners aiming to reach their target score by recognizing patterns in different types of IELTS tests



1:1 CLASS

- Speaking: Enhance your English speaking skills and confidence by practicing with past exam questions. Our structured approach familiarizes you with different question types through targeted exercises.
- Reading: Develop strategies to tackle reading comprehension questions of varying difficulty levels. Gain practical experience by practicing with mock tests.
- Listening: Learn effective listening strategies, practice solving past exam question types, and engage in practical exercises to improve your listening skills.
- Writing: Receive personalized instruction on writing techniques and detailed feedback on writing assignments to enhance your writing abilities.

*In 1:1 classes, students can focus on preferred subjects to tailor the course to their individual needs. (Class course can be change.)

IELTS SAMPLE SCHEDULE

CLASS TIME	SUBJECT	CLASS TYPE
08:00-08:50	Reading for IELTS	1:1 Class
09:00-09:50		BREAK
10:00-10:50	Listening for IELTS	1:1 Class
11:00-11:50	Speaking for IELTS	1:1 Class
12:00-12:50		LUNCH
13:00-13:50	Writing for IELTS	1:1 Class
14:00-14:50	Speaking for IELTS	1:1 Class
15:00-15:50		BREAK
16:00-16:50	Listening for IELTS	1:1 Class
17:00-17:50		DINNER



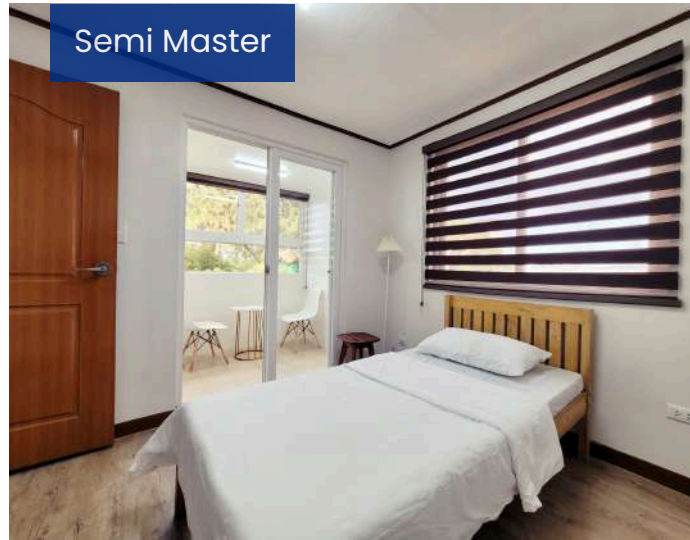
STUDENT'S DORMITORY



SEMI-TYPE

It is a dormitory designed like an apartment, featuring a living room and kitchen. The dormitory offers semi-master single rooms with an attached bathroom, and semi-single rooms without an attached bathroom (access to the shared bathroom in the living room).

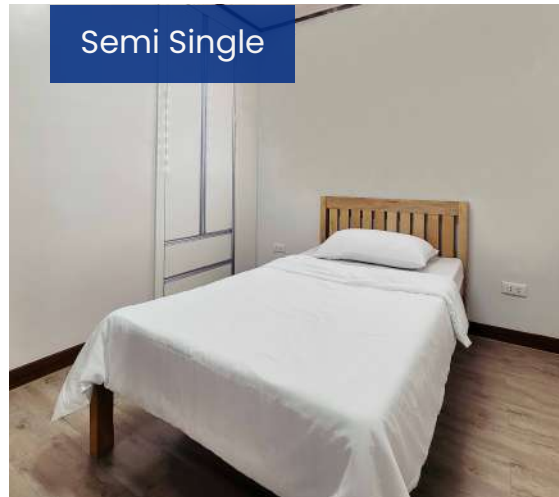
Semi Master



Balcony & Toilet



Semi Single



Living Room



Work Space



Kitchen



Refrigerator & Water Purifier



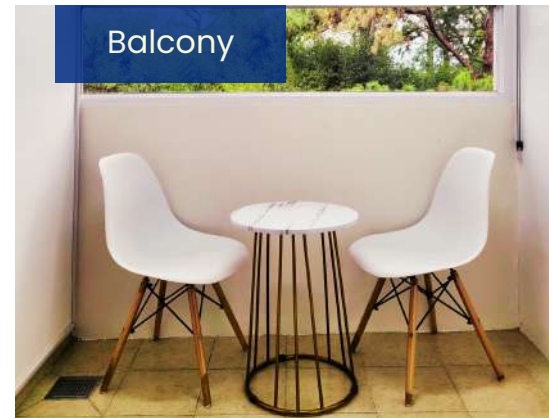
STUDIO TYPE

This dormitory features various room types such as studio single rooms without kitchen facilities, studio double rooms, studio quad rooms, studio single rooms with kitchen facilities, and deluxe rooms (Each deluxe room includes a balcony and a bathroom.)

Studio Single



Balcony



Studio Double



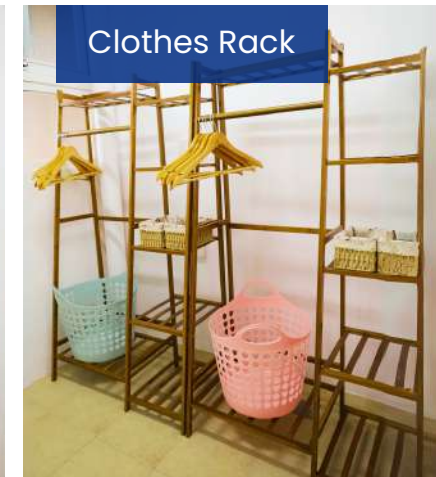
Studio Quad



Bathroom



Clothes Rack

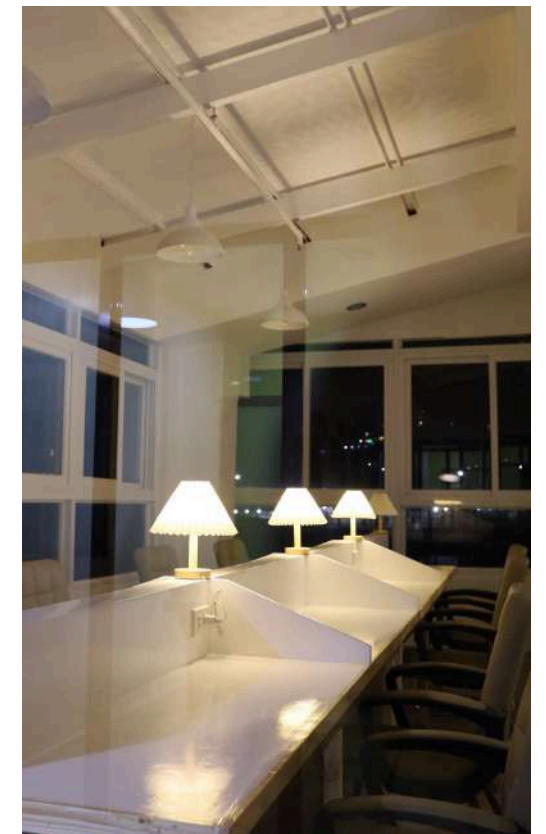
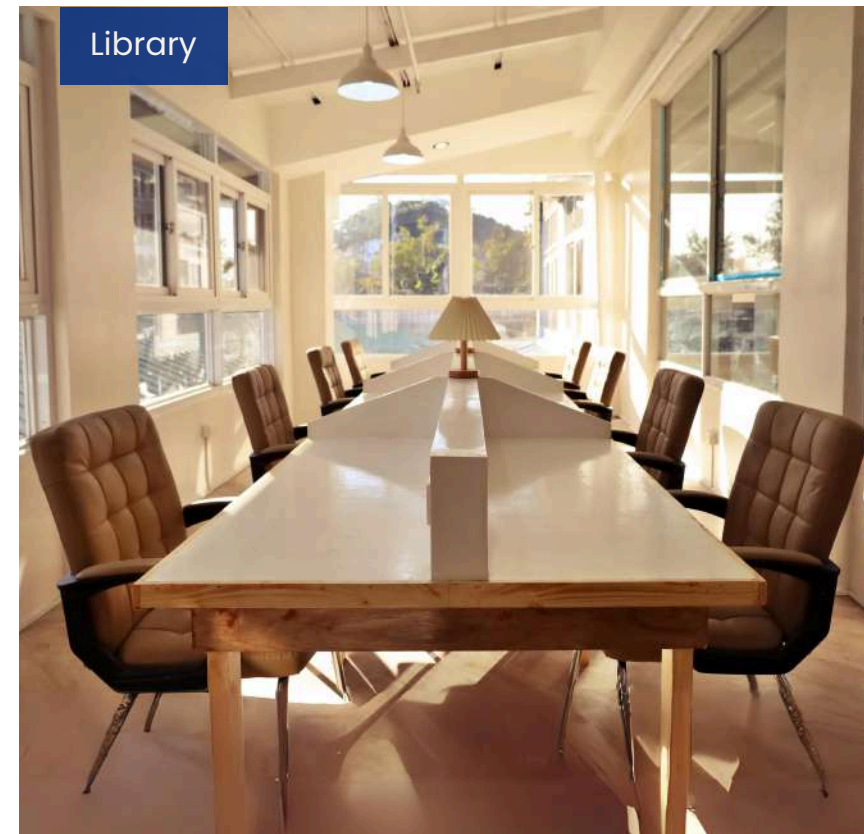


ACADEMY AREA

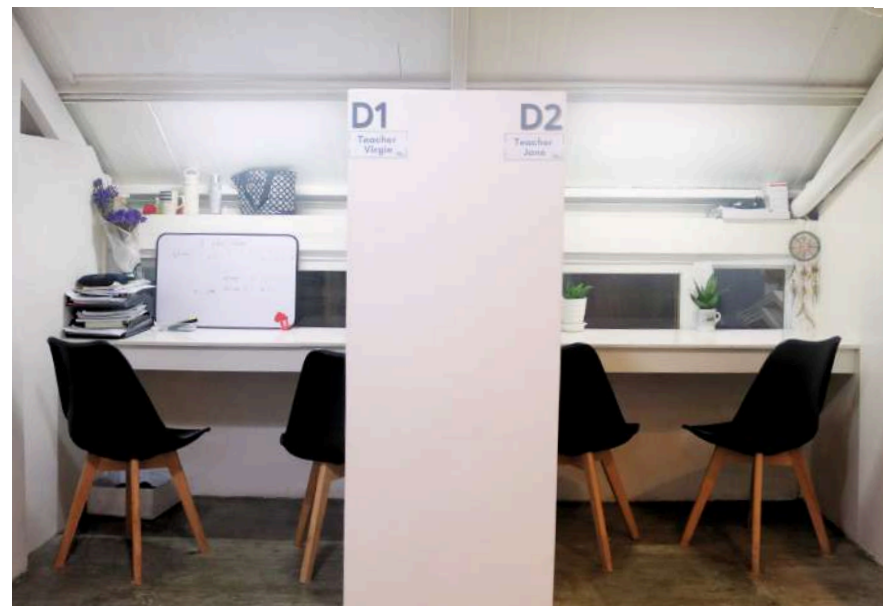
Hallway



Library



1:1 Classroom



Presentation Room



Group Classroom



Academic Bulletin Board



FACILITIES

Reception



Co-working Space



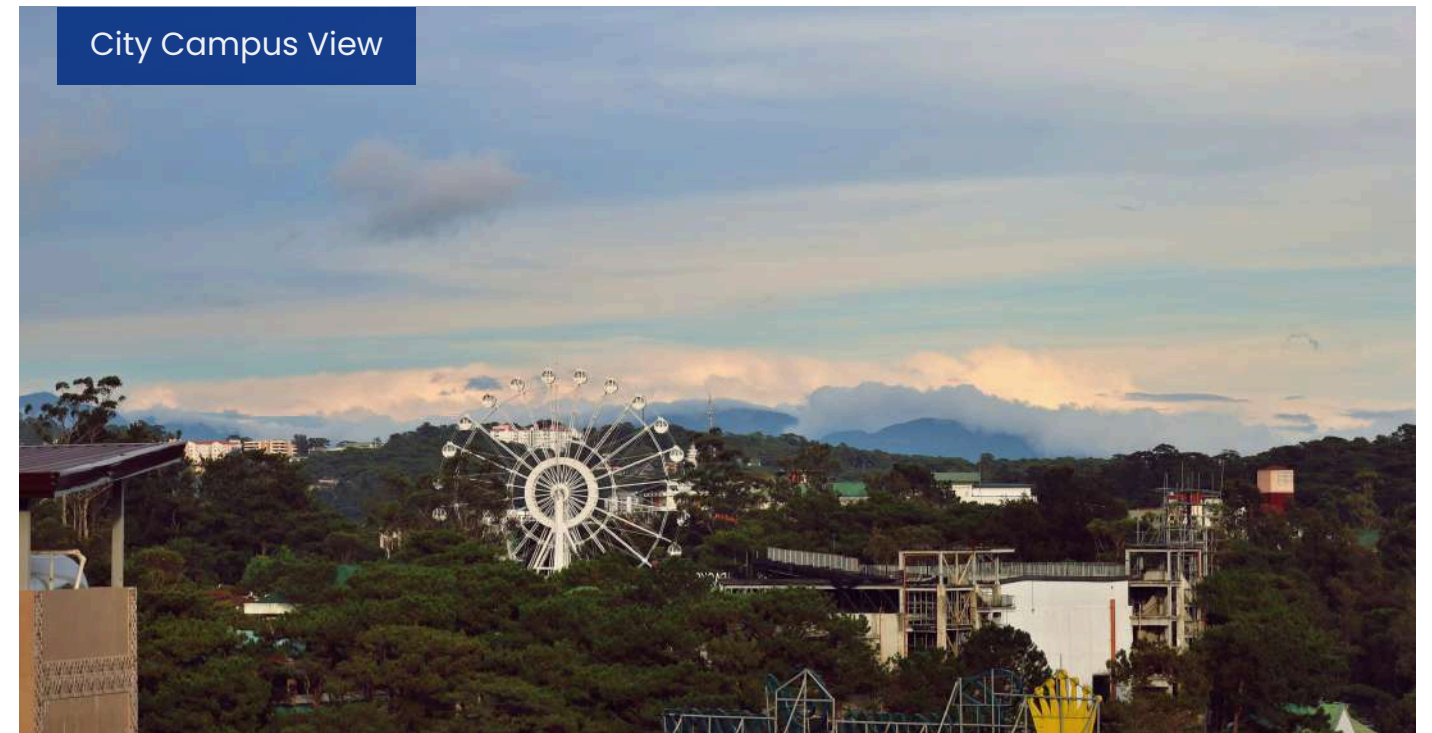
Library



Table Counter



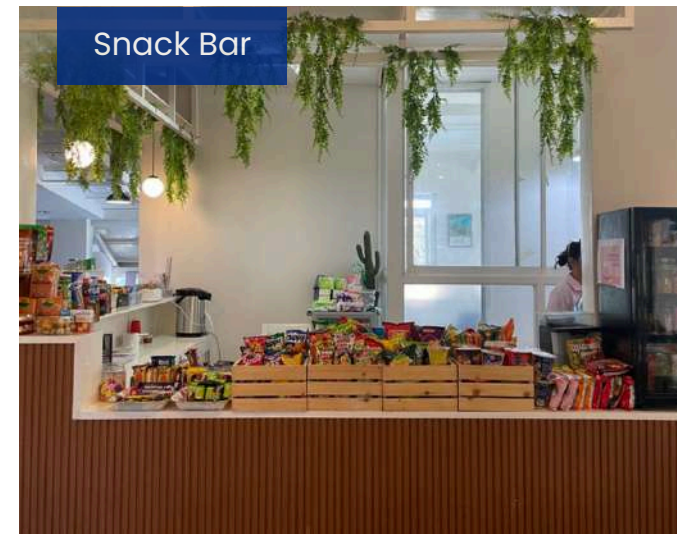
City Campus View



Dining



Snack Bar





BECI CAMPUS

PROSPECTIVE STUDENTS



CAFE CAMPUS

Students who are afraid to speak English or those with beginner skills who want to improve their English skills in a short time. Beginners who want to enjoy a healing forest garden with only women, those who want to travel around the world, those who want to make lifelong friends, and those who want to improve their English skills while staying close with teachers in a small group.

SPEED ESL | LITE ESL | INTENSIVE SPARTA ESL | WORKING HOLIDAY



SPARTA CAMPUS

Students who want to improve their speaking skills in a short period of time through systematic management of the sparta format or to obtain desired test scores such as TOEIC & IELTS quickly, and all students who need a strong sparta English course for studying abroad, working holiday, etc.

24 ESL | IELTS | TOEIC



CITY CAMPUS

Everyone who needs English: from beginners who start their careers after graduating from college to seniors who are thinking about studying abroad after retirement. All those who need business English such as fluent and logical presentation skills used in real business situations such as office workers, freelancers, job start-up students, corporate group training, overseas business prospects, and English interview.

SPEED ESL | LITE ESL | IELTS | ESP

STUDENT TESTIMONIAL

Discover the voices of students from different campuses as they share their invaluable feedback on this page. Dive in and explore the diverse perspectives shaping our educational landscape!



NAME: FAISAL
NATIONALITY: BANGLADESHI
COURSE: SPEED ESL
CAMPUS: CAFE CAMPUS

My first impression of this school was that it felt like home because both the students and teachers were friendly. Before coming here, I couldn't speak English, but now I'm good at it. My best experience as a foreign student was studying here and traveling with students from different places here in the Philippines.



NAME: MII
NATIONALITY: JAPANESE
COURSE: 24 ESL
CAMPUS: SPARTA CAMPUS

I enjoyed the speaking group class in my ESL course because my classmates were kind, friendly, and funny. The positive group dynamic helped me improve my communication and speaking skills. I recommend making foreign friends as it provides more opportunities to speak English naturally.



NAME: CORA
NATIONALITY: TAIWANESE
COURSE: SPEED ESL
CAMPUS: CITY CAMPUS

When I first arrived, my English skills were not great, but the teachers and classmates were incredibly patient as I started speaking English. With their careful guidance, I could sense my progress gradually. Meeting my classmates and teachers has been a delightful experience.



NAME: MOHSEN
NATIONALITY: ARAB
COURSE: SPEED ESL
CAMPUS: CAFE CAMPUS

I chose this academy because it offers one-on-one classes, with teachers who understand each student's learning needs. The academy may look simple, but it provides a good environment for studying. The teachers and students are like family, so you will never feel alone. And don't be shy, and talk to everyone to improve your language skills.



NAME: SHIRLEY
NATIONALITY: VIETNAMESE
COURSE: IELTS
CAMPUS: SPARTA CAMPUS

I spent my time at this academy studying with kind, wonderful teachers. I enjoyed every moment because the teachers shared a lot of knowledge and tips on studying, which helped me improve my skills. I am grateful for the friendships and knowledge I gained here at the academy.



NAME: DONNY
NATIONALITY: KOREAN
COURSE: SPEED ESL
CAMPUS: CITY CAMPUS

When I came here, everyone felt like a family. The managers are so friendly, the students are all healthy and very focused on studying. The reason is that despite Sparta, it seems that a natural environment for studying has been created.

BECI ACTIVITIES

Explore the array of BECI activities happening across campuses through the eyes of students. Step into their experiences and get inspired by their engagement!



BBQ Party



Language Exchange



Weekly Presentation



Monthly Activities



WEEKEND ACTIVITIES

Hundred Islands



Sagada Cave



Mt. Polis



San Juan La Union



Dingalan Aurora



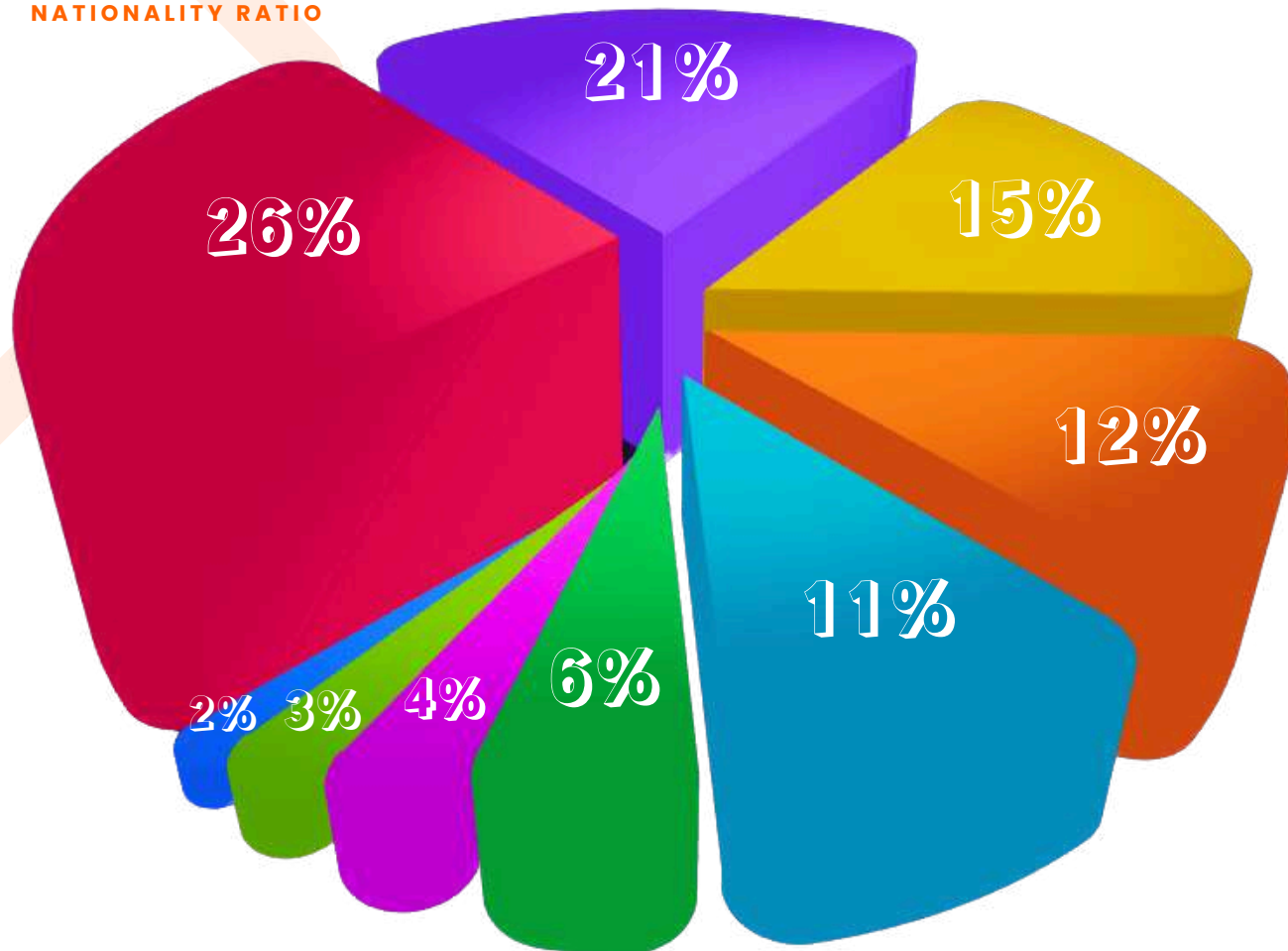
Vigan



BECI NATIONALITY RATE



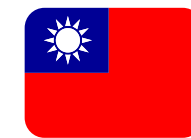
OVERALL NATIONALITY RATIO



JAPANESE



KOREAN



TAIWANESE



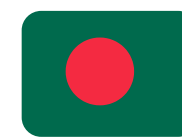
VIETNAMESE



SAUDI ARABIAN



CHINESE



BANGLADESHI



THAI



YEMENI



KOREAN



TAIWANESE



THAI



SAUDI ARABIAN



JAPANESE



BANGLADESHI



VIETNAMESE



YEMENI



CHINESE

BECI CAMPUS MAP



TOURIST SPOTS

- 1 SM Mall
- 2 Burnham Park
- 3 Session Road

BUS TERMINAL

- 1 Partas / Joy Bus Terminal
- 2 Victory Liner Terminal

RECREATIONAL ACTIVITIES

- 1 Baguio Country Club Golf
- 2 Camp John Hay Golf Club
- 3 Park Golf Simulator
- 4 Pinewoods Golf
- 5 Baguio Tennis Club
- 6 Badminton Court
- 7 Bowling at Puyat Sports

FITNESS ACTIVITIES

- 1 Fitness Hub Gym
- 2 Altitude Gym
- 3 Fitness Zone Gym
- 4 Murphy's Fitness Gym
- 5 Pranayala Yoga
- 6 Baguio K-Pilates Studio

CAFE & RESTAURANT

- 1 Craft Burger Philippines
- 2 50's Diner
- 3 Canto
- 4 113 Wagner Cafe
- 5 Foam Coffee
- 6 Abonabil حلال
- 7 Sajj Restaurant حلال

OTHERS

- 1 BDO ATM
- 2 C & Triple A- Grocery
- 3 Satellite Market
- 4 Baguio General Hospital
- 5 Notre Dame Hospital

BECI'S REGULATIONS

ACADEMIC REGULATIONS

Excerpts from Orientation Materials

1. CLASS HOURS

- Regular class: Monday to Friday (50 mins / 10 mins break)
- Night class: Monday to Thursday (50 mins / 10 mins break)
- Night class schedule: between 6:20pm to 21:00pm.
- The start time may be different for each student.

2. CLASS RULES

- The school provides a minimum of 18 academic days per month.
- Make up classes will be given in case the school failed to meet the minimum number of classes in a month. The schedule for the make up class will be posted in the bulletin board.

NOTE

1. No classes during Philippine holidays.
2. The school is not responsible for natural disasters such as typhoons, earthquakes etc. Make up classes is upon the school's discretion in case the make up classes are not possible due to some circumstances.
3. For students who missed their classes due to personal reasons, make up classes are not given.

3. ABSENCES AND TARDINESS

- If you are absent due to personal concerns, you must follow the schedule and absence application procedure with the scheduler at the INFORMATION DESK at least one hour before the start of the class.
- 10 minutes late is considered absent.
- More than 3 absences in a class will result to cancellation and will be allowed to take it after 4 weeks.
- If the teacher is not in the class within 5 minutes, please go to the administration office and report it.

HOUSE RULES

1. GOING OUT AND CURFEW

SPEED ESL , LITE ESL							24 ESL, TOEIC & IELTS COURSE						
Sun	Mon	Tue	Wed	Thur	Fri	Sat	Sun	Mon	Tue	Wed	Thur	Fri	Sat
6am to 10pm	5pm to 10pm				5pm to 2am	6am to 2am	6am to 10pm	Not allowed to go out				5pm to 2am	6am to 2am
The day before holiday							Holiday						
5pm to 2am							6am to 10pm						

- City Campus does not have a curfew.
- Every Saturday from 2AM to 6AM, the gate will be strictly closed.
- On Saturday, if there is a makeup class, weekday rules apply. When entering and leaving the school, leave the room key and ID card at the gate, fill in the form provided.
- At the gate, the staff of the school may voluntarily carry out checking of personal belongings.

1.1 HALL PASS

- SEMI-SPARTA students are allowed to go out during weekdays from 5:00 pmas long as they do not have night classes.
- If students need to go out before 5:00 pm due to urgent matters or justifiable reasons, they are allowed to go out only if the HALL PASS is approved.

2. TRAVEL WAIVER AND OVERNIGHT PERMIT

- Staying out overnight during weekends, fill in and submit the OVERNIGHT PERMIT.
- If you are traveling on a flight, fill in and submit the TRAVEL WAIVER with the manager's signature.
- The issuance of TRAVEL WAIVER and OVERNIGHT PERMIT is in Academic building until 4pm UNTIL EVERY Thursday ONLY.
- Staying out overnight during weekdays is not allowed.
- Even if you have OVERNIGHT PERMIT, you are not still allowed to enter the school during curfew hours.

NOTE: You must have a copy of the hotel confirmation or air ticket reserved under student's name to issue a permit. In addition, the academy is not responsible for accidents that occur during the trip.

3. KITCHEN

BECI CAFE Students

- Students under the influence of alcohol are not allowed to use the kitchen. A penalty of 3,000 pesos will be imposed immediately in case of violation.
- If you want to use the dining hall personally, you need to fill out the kitchen-use permit and get approval from the school administrator.

BECISPARTA CAMPUS

- students are not allowed to use the kitchen.
- The dining hall on the first floor can be used as a self-study space outside of meal time.
- Kitchenware cannot be taken out and is liable for damages

4. DORMITORY

- Dorms are assigned by the academic administrator.
- Personal supplies and toilet paper are not provided by the academy.
- The loss and damage of the academy's property caused by the carelessness of the student shall be compensated with the same items.
- Requests to change the dormitory room can be applied at the ADMIN OFFICE every Wednesdays until 16:00, and can be changed depending on vacancies.
- Dormitory movement is possible on the afternoon of Saturdays or Sundays when the change is approved.
- Cooking in the dormitory is prohibited, and the use of any devices or appliances that produce fire and strong heat is prohibited.

NOTE: For the safety and convenience of students, academic managers can enter the dormitory without prior notice and consent to students.

5. LAUNDRY SERVICE

- Laundry service is provided with laundry fees.
(1-2kg – 70PHP) (2-3kg – 105PHP)
(3-4KG – 140PHP) (4-5kg – 175PHP)
- Every Friday afternoon, the student will be given invoice of laundry fees of the week and asked to pay the amount in invoice to the person in charge. (weekly payment)
- The laundry shop has its date and time for collecting and delivering the laundry.

A. HOW TO USE

- Before you leave your laundry, fill out the laundry slip. (Please place the laundry slip inside your laundry bag.)

B. LOST AND DAMAGED

- If there is no laundry slip, it is not possible to report the loss
- If the laundry is lost, you can check it at the admin office.
- For expensive garments, we do not advice washing.

NOTE: For clothes that require special care, you may bring it to another laundry shop to get the specific service